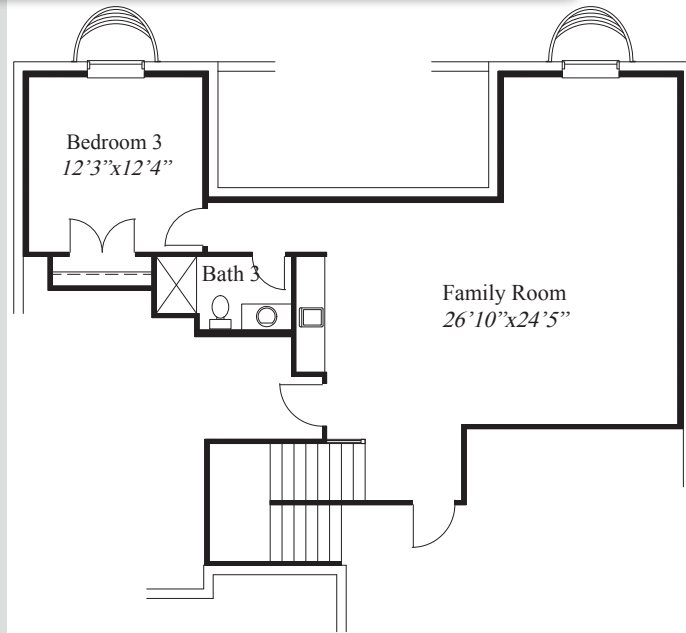
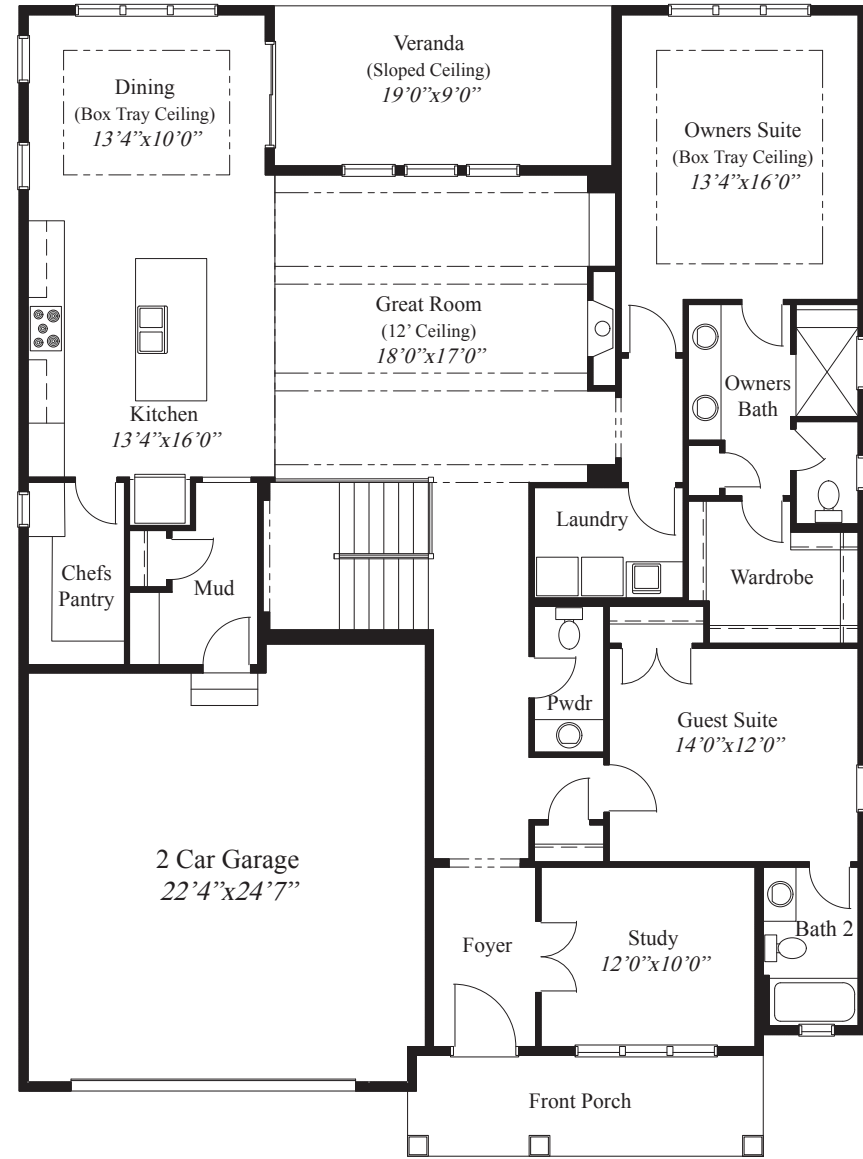


# Ravines at Hoover - Lot 8205

4615 Talus Road



BIG WALNUT SCHOOLS



LOWER LEVEL 863 SQ.FT.

FIRST FLOOR 2,130 SQ.FT.

- ### HOME FEATURES
- 2,993 SqFt
  - 3 Bedrooms
  - 3 1/2 Baths
  - 2 Car Garage(Oversized)
  - Large Front Porch
  - 12' Beamed Ceiling in Great Room
  - Box Tray Ceilings in Owners Suite & Dining
  - Kitchen w/Large Walk-in Chefs Pantry
  - Covered Rear Veranda w/Sloped Ceiling
  - Private Study w/Glass French Doors
  - Private Mud Room Entry w/Bench & Closet
  - 1st Floor Guest Suite w/Private Bath
  - Owners Bath w/Oversized Shower & Large Wardrobe
  - Finished LL w/Family Room, 3rd Bed, Full Bath



© Romanelli & Hughes Building Co.  
 All home plans present on this brochure are protected by copyright.  
 Reproduction either in whole or in part without written permission  
 is strictly prohibited. All renderings and floor plans are artists'  
 conceptions and are not intended to be an actual depiction of the  
 home or its surroundings.