

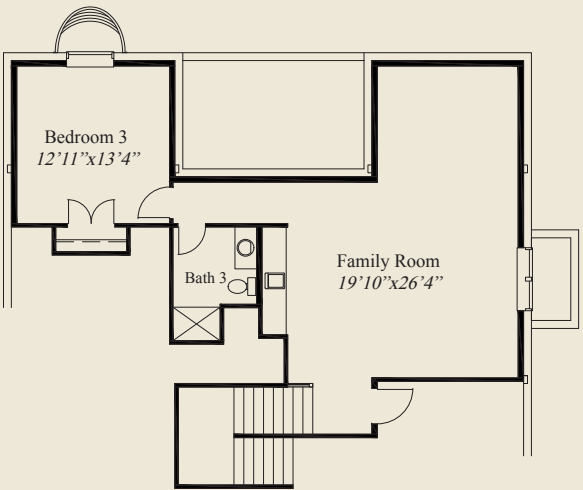


Wistman 1

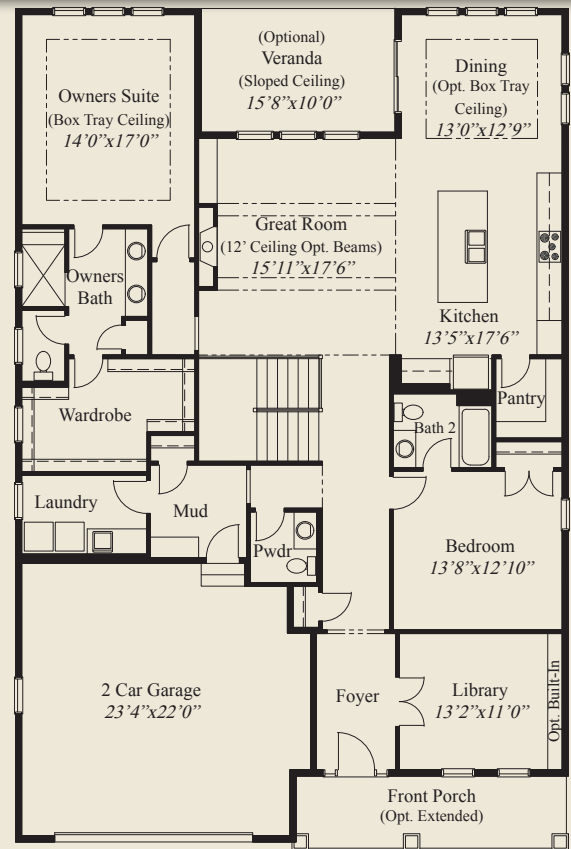


Wistman 2

- Plan Information**
- 3,067 SqFt
 - 3 Bedrooms
 - 3 1/2 Baths
 - 2 Car Garage
 - Box Tray Ceilings in Owners Suite
 - 12' Ceiling Great Room
 - 10' Ceilings, 8' Doors on 1st Floor
 - Private Mud Entry
 - Kitchen w/Walk-in Pantry
 - 1st Flr Guest Suite w/Private Bath
 - Opt. Rear Covered Veranda w/Sloped Ceiling
 - Library w/French Doors & Optional Built-ins
 - Owners Suite w/Huge Shower & Wardrobe
 - Laundry w/Opt. Door to Wardrobe
 - Opt. Finished LL w/Family Rm, 3rd Bedroom, Bath



OPTIONAL FINISHED LOWER LEVEL 847 SQ.FT.



FIRST FLOOR 2,220 SQ.FT.

© Romanelli & Hughes Building Co.
 All home plans presented on this brochure are protected by copyright. Reproduction either in whole or in part without written permission is strictly prohibited. All renderings and floor plans are artists' conceptions and are not intended to be an actual depiction of the home or its surroundings.

