

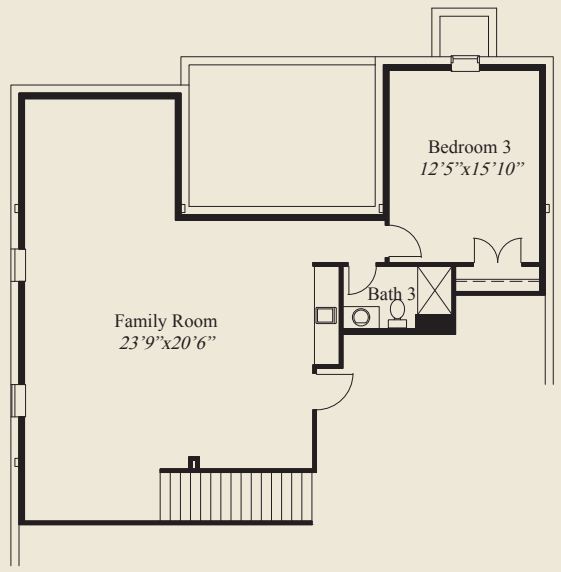


Epping 1

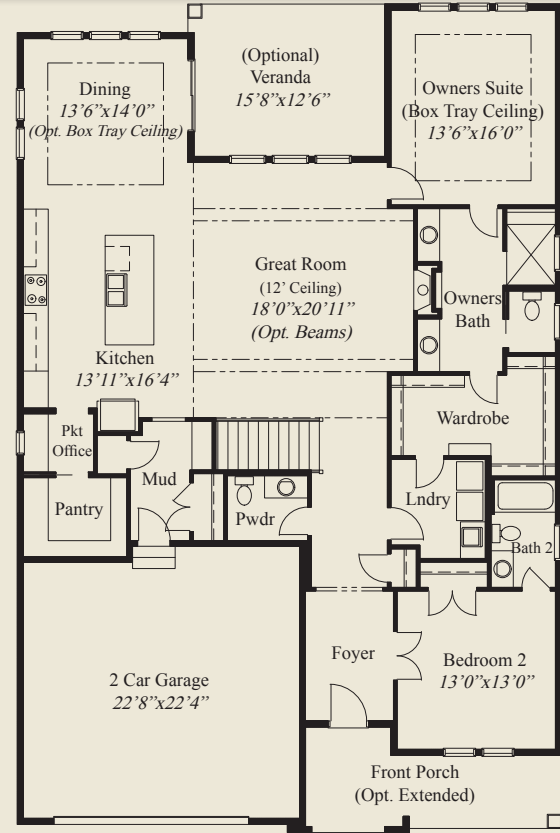


Epping 2

- Plan Information**
- 3,171 SqFt
 - 3 Bedrooms
 - 3 1/2 Baths
 - 2 Car Garage
 - Large Front Porch
 - 12' Ceiling Great Room
 - 10' Ceilings, 8' Doors on 1st Floor
 - Private Mud Entry
 - Kitchen w/Opt. Pocket Office & Walk-in Pantry
 - 1st Flr Guest Suite w/French Doors, Private Bath
 - Opt. Rear Covered Veranda w/Sloped Ceiling
 - Owners Suite w/Huge Shower & Wardrobe
 - Laundry w/Opt. Door to Wardrobe
 - Opt. Pocket Doors
 - Opt. Finished LL w/Family Rm, 3rd Bedroom, Bath



OPTIONAL FINISHED LOWER LEVEL 1,049 SQ.FT.



FIRST FLOOR 2,122 SQ.FT.

© Romanelli & Hughes Building Co.
 All home plans present on this brochure are protected by copyright. Reproduction either in whole or in part without written permission is strictly prohibited. All renderings and floor plans are artists' conceptions and are not intended to be an actual depiction of the home or its surroundings.

