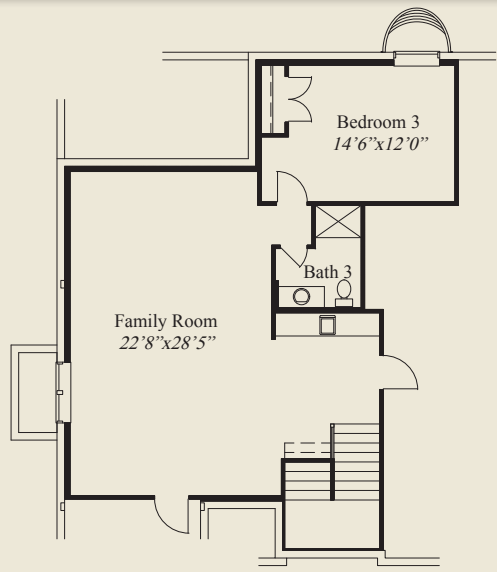




Burnham 1

- Plan Information**
- 3,102 SqFt
  - 3 Bedrooms
  - 3 1/2 Baths
  - 3 Car Garage
  - Cathedral Ceiling Great Room
  - 10' Ceilings, 8' Doors on 1st Floor
  - Private Mud Entry
  - Kitchen w/ Walk-in Chefs Pantry
  - 1st Flr Guest Suite w/Private Bath
  - Opt. Rear Covered Veranda
  - Owners Suite w/Huge Shower & Wardrobe
  - Opt. Finished LL w/Family Rm, 3rd Bedroom, Bath
  - Opt. Pocket Doors
  - Library with French Doors w/Opt. Built-ins
  - Box Tray Ceiling in Owner's Suite



OPTIONAL FINISHED LOWER LEVEL 940 SQ.FT.



FIRST FLOOR 2,162 SQ.FT.



© Romanelli & Hughes Building Co.  
 All home plans present on this brochure are protected by copyright. Reproduction either in whole or in part without written permission is strictly prohibited. All renderings and floor plans are artists' conceptions and are not intended to be an actual depiction of the home or its surroundings.