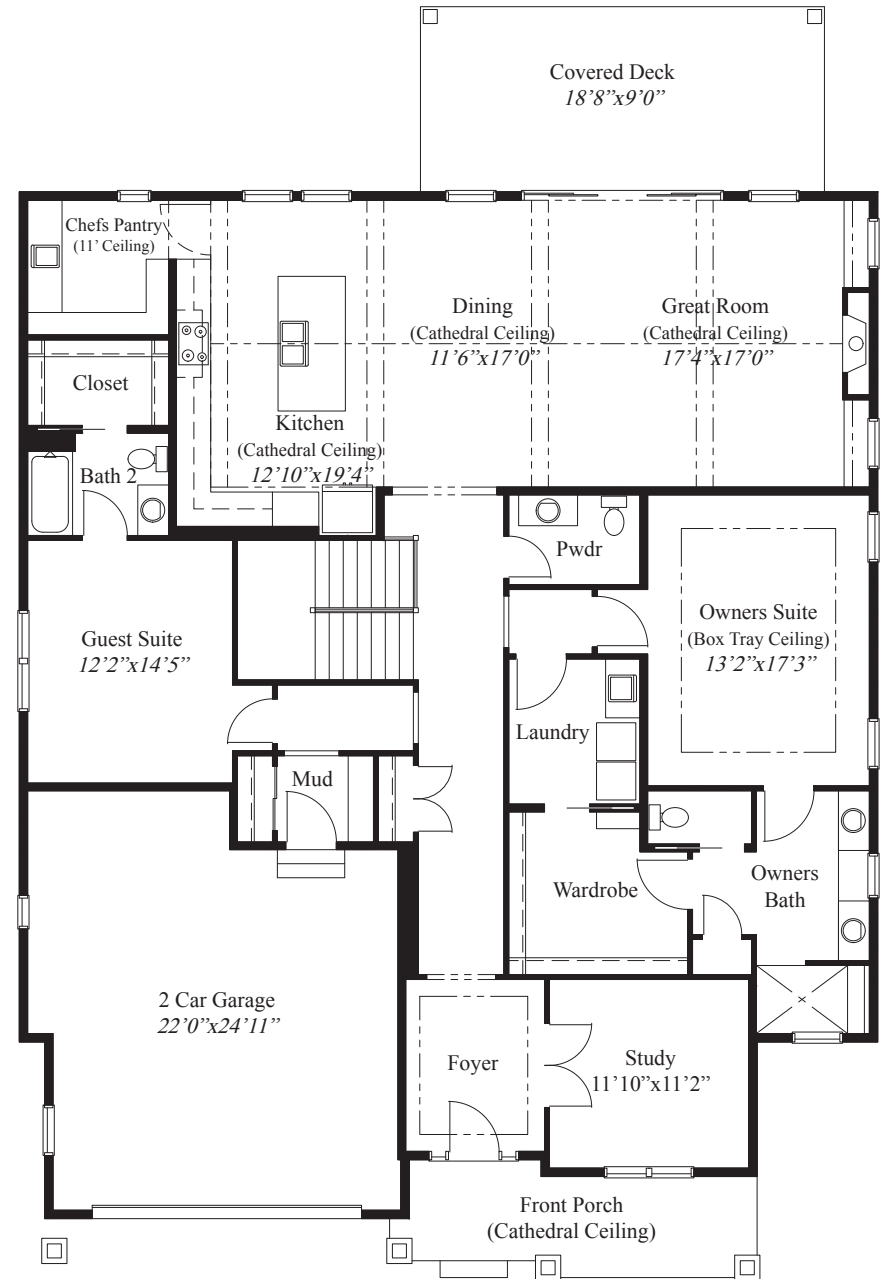


Briarfield - Lot 21

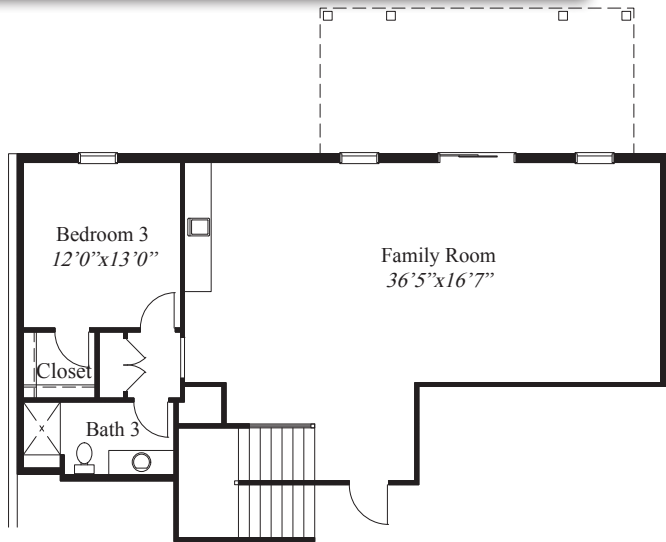
3165 Souder Drive



GAHANNA SCHOOLS



FIRST FLOOR 2,437 SQ.FT.



LOWER LEVEL 1,039 SQ.FT.

HOME FEATURES

- 3,476 SqFt
- 3 Bedrooms
- 3 1/2 Baths
- 2 Car Garage (Oversized)
- Large Front Porch
- Cathedral Ceiling Great Room, Kitchen & Dining Room
- Box Tray Ceilings in Foyer & Owners Suite
- 10' Ceilings, 8' Doors on 1st Floor
- Private Mud Entry w/Bench & Closet
- Large Kitchen w/Hidden Chefs Pantry
- Owners Bath w/Large Shower
- Huge Wardrobe w/Laundry Access
- First Floor Guest Suite w/Private Bath & Walk-in Closet
- Formal Study w/French Doors
- Finished LL w/Family Room, 3rd Bed, Bath
- Finished LL w/Walk-out and Daylight Windows
- Covered Deck



© Romanelli & Hughes Building Co.

All home plans present on this brochure are protected by copyright. Reproduction either in whole or in part without written permission is strictly prohibited. All renderings and floor plans are artists' conceptions and are not intended to be an actual depiction of the home or its surroundings.