



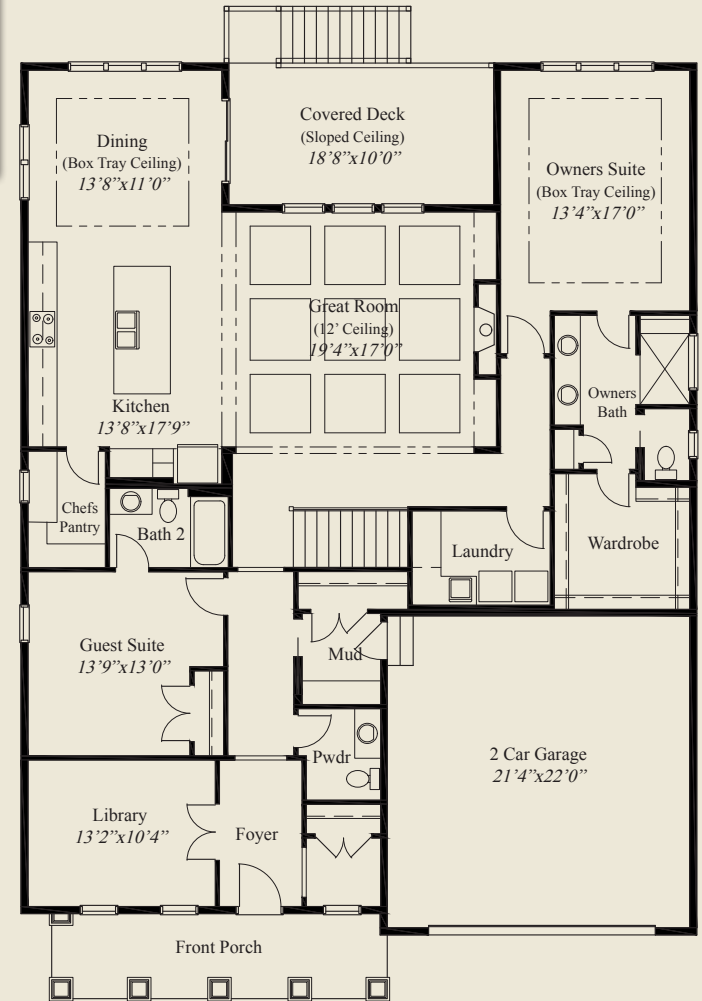
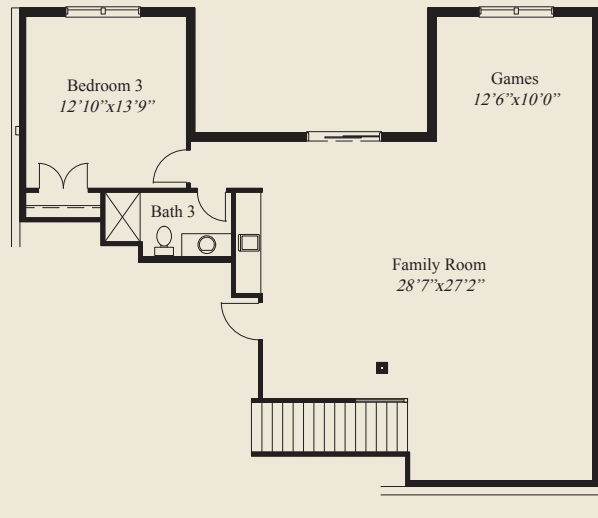
Plan Information

- 3,381 SqFt
- 3 Bedrooms
- 3 1/2 Baths
- 2 Car Garage
- 12' Box Beamed Ceiling Great Room
- 10' Ceilings, 8' Doors on 1st Floor
- Dining & Owners Suite w/Box Tray Ceilings
- Kitchen w/Walk-in Pantry
- Rear Covered Deck
- Owners Suite w/Oversize Shower & Wardrobe
- First Floor Guest Suite w/Private Bath
- Library w/French Doors
- Private Mud Entry w/Bench & Closet
- Finished LL Walk-out w/Daylight Windows
- LL w/Family Rm, Bedroom, Full Bath



Home Information

This custom patio home features a large front porch, 12' box beamed ceiling great room, and detailed tray ceilings in the foyer, dining and owners suite. 10' ceilings and 8' doors are throughout the first floor. The spacious kitchen has a walk-in pantry. The owners suite includes an oversized shower and a huge wardrobe. A first floor guest suite w/private bath, a covered deck, a library w/french doors, and a finished lower level walk-out w/daylight windows, huge family room, 3rd bedroom, & bath complete this beautiful home.



© Romanelli & Hughes Building Co.
 All home plans present on this brochure are protected by copyright. Reproduction either in whole or in part without written permission is strictly prohibited. All renderings and floor plans are artists' conceptions and are not intended to be an actual depiction of the home or its surroundings.

LOWER LEVEL 1,166 SQ.FT.

FIRST FLOOR 2,215 SQ.FT.

