

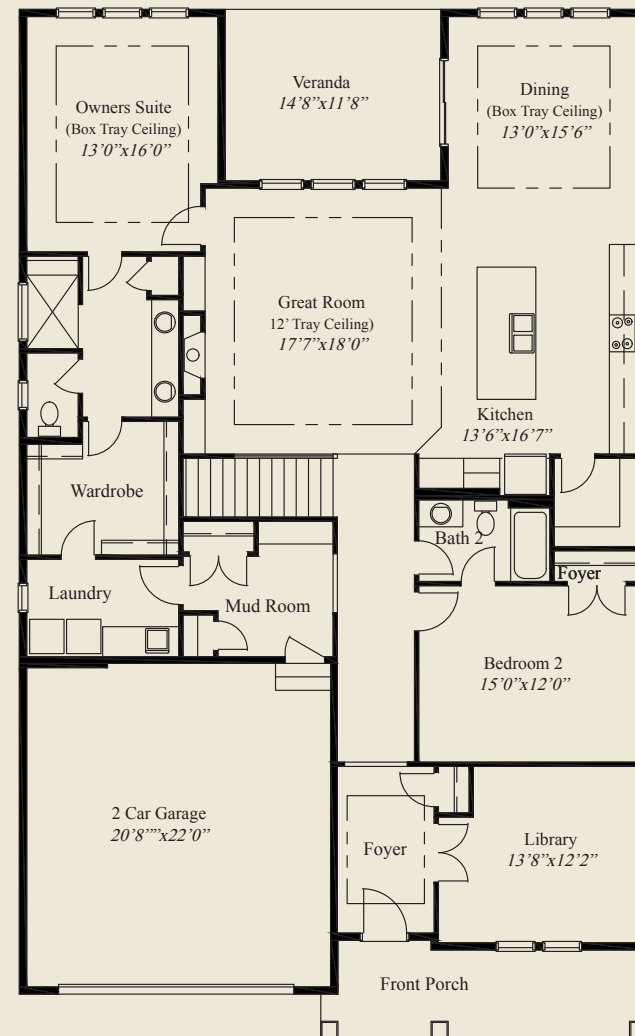
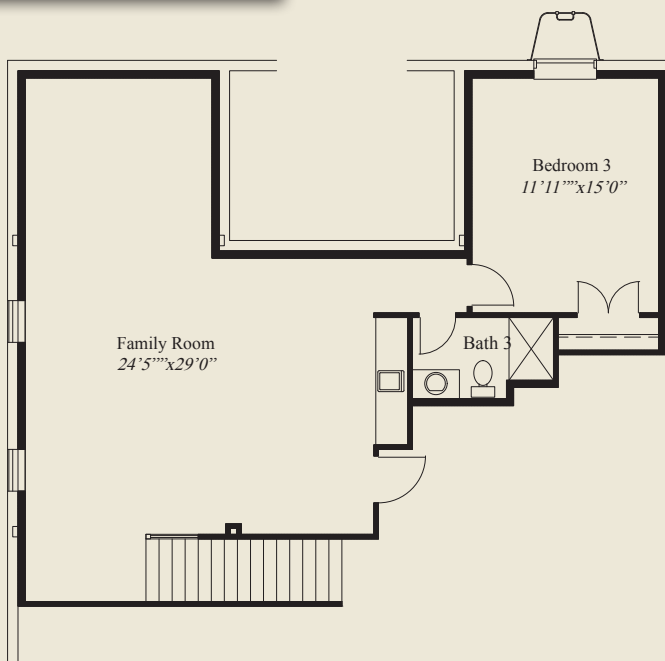


**Plan Information**

- 3,058 SqFt
- 3 Bedrooms
- 3 Baths
- 2 Car Garage (Oversized)
- Private Mud Entry w/Opti. Pocket Door, Laundry
- Foyer, Dining, Owners Suite w/Box Tray Ceilings
- 12' Box Tray Ceiling Great Room
- 10' Ceilings, 8' Doors on 1st Floor
- Kitchen w/Large Walk-in Pantry
- Rear Covered Veranda
- Owners Suite w/Oversize Shower
- Huge Wardrobe w/Optional Door to Laundry
- Library w/French Doors to Foyer
- Finished LL w/Family Rm, Bedroom, Full Bath

**Home Information**

This custom patio home features a large front porch, 12' box tray ceiling great room, and detailed tray ceilings in the foyer, dining and owners suite. A mud entry includes the option of a pocket door. 10' ceilings and 8' doors are throughout the first floor. The spacious kitchen has a large walk-in pantry. The owners suite includes an oversized shower and a huge wardrobe w/ optional laundry access door. A first floor guest bedroom, a covered veranda, a library w/french doors, and a finished lower level w/huge family room, 3rd bedroom, & bath complete this beautiful home.



© Romanelli & Hughes Building Co.  
 All home plans present on this brochure are protected by copyright. Reproduction either in whole or in part without written permission is strictly prohibited. All renderings and floor plans are artists' conceptions and are not intended to be an actual depiction of the home or its surroundings.

LOWER LEVEL 914 SQ.FT.

FIRST FLOOR 2,144 SQ.FT.

