



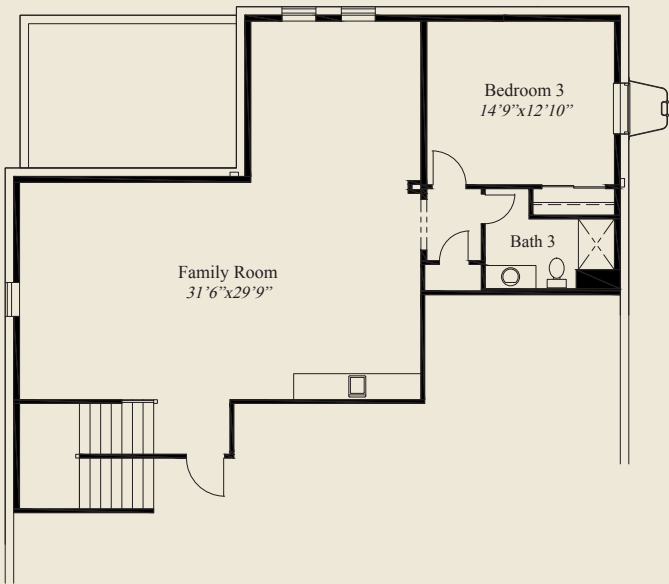
Ashford 1



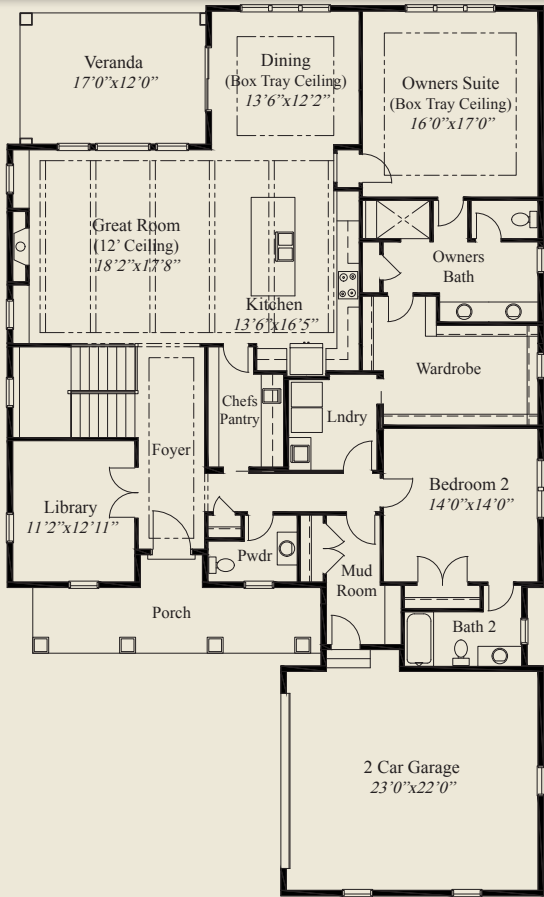
Ashford 2

Plan Information

- 2,488 SqFt
- 2 Bedrooms
- 2 1/2 Baths
- 2 Car Garage (Oversize)
- 10' Ceilings, 8' Doors on First Floor
- 12' Beamed Ceiling in Great Room & Kitchen
- Box Tray Ceilings in Foyer, Dining, Owners Suite
- Owners Suite w/Oversized Shower
- Spacious Wardrobe w/Door to Laundry
- Large Kitchen w/Walk-Thru Chefs Pantry
- Private Library w/ French Doors & Opt. Built-ins
- Switchback Easy Step Stairs to LL
- Guest Suite w/Private Bathroom
- Mud Entry w/Bench, Closet
- Covered Veranda
- Full Basement for Optional Finishing



OPTIONAL FINISHED LOWER LEVEL 1,120 SQ.FT.



FIRST FLOOR 2,488 SQ.FT.



© Romanelli & Hughes Building Co.  
All home plans present on this brochure are protected by copyright. Reproduction either in whole or in part without written permission is strictly prohibited. All renderings and floor plans are artists' conceptions and are not intended to be an actual depiction of the home or its surroundings.