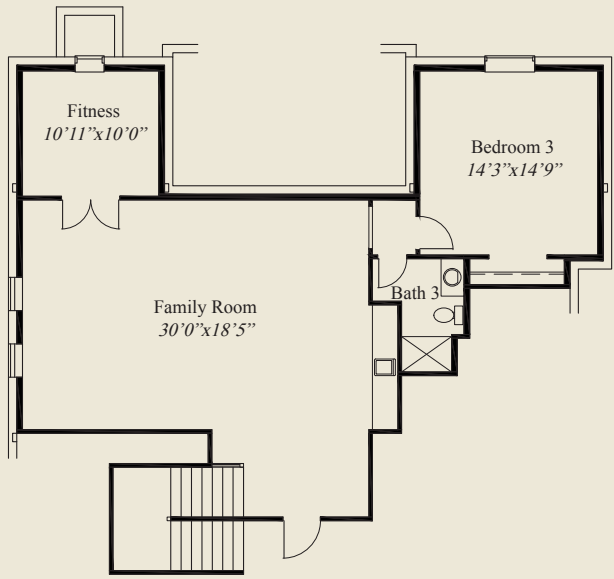




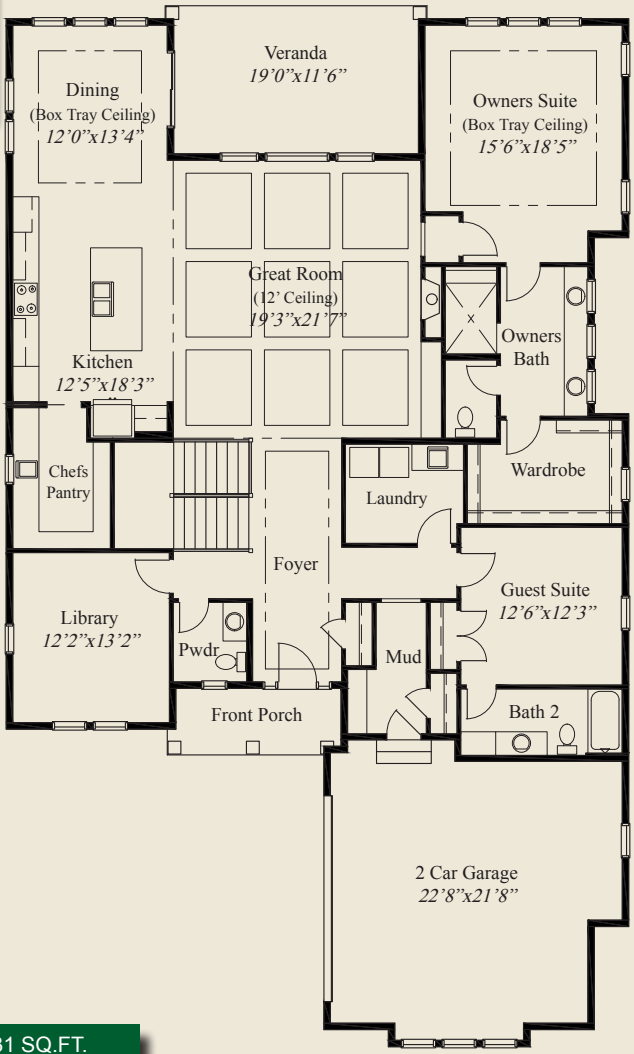
- Plan Information**
- 3,532 SqFt
  - 3 Bedrooms
  - 3 1/2 Baths
  - 2 Car Garage
  - Large Front Porch
  - 10' Ceilings, 8' Doors on First Floor
  - 12' Box Beamed Ceiling Great Room
  - Tray Ceilings in Foyer, Dining, Owners Suite
  - Open Kitchen w/Walk-in Chefs Pantry
  - Mud Rm w/Bench & Closet
  - First Floor Private Library
  - First Floor Guest Suite w/Private Bath
  - Owners Suite w/Large Shower & Wardrobe
  - Rear Covered Veranda
  - Finished LL Family Rm, 3rd Bdrm, Bath, Fitness Rm

**Home Information**

This custom ranch features a large front porch, 1st flr 10' ceilings, 8' doors, and a 12' box beamed ceiling great room. The mud entry includes a bench & closet. Tray ceilings adorn the foyer, dining & owners suite. The kitchen includes a large walk-in chefs pantry. The owners suite features an oversize shower and huge wardrobe. A 1st flr guest suite w/private bath, a private library, a covered veranda, and a finished LL w/huge family room, 3rd bedroom, fitness room and full bath, all add to the appeal of this beautiful home.



LOWER LEVEL 1,101 SQ.FT.



FIRST FLOOR 2,431 SQ.FT.

© Romanelli & Hughes Building Co.  
 All home plans present on this brochure are protected by copyright. Reproduction either in whole or in part without written permission is strictly prohibited. All renderings and floor plans are artists' conceptions and are not intended to be an actual depiction of the home or its surroundings.

