



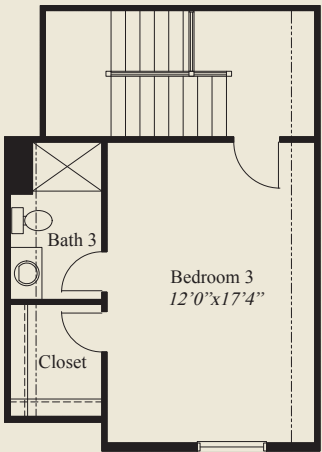
Craftsman



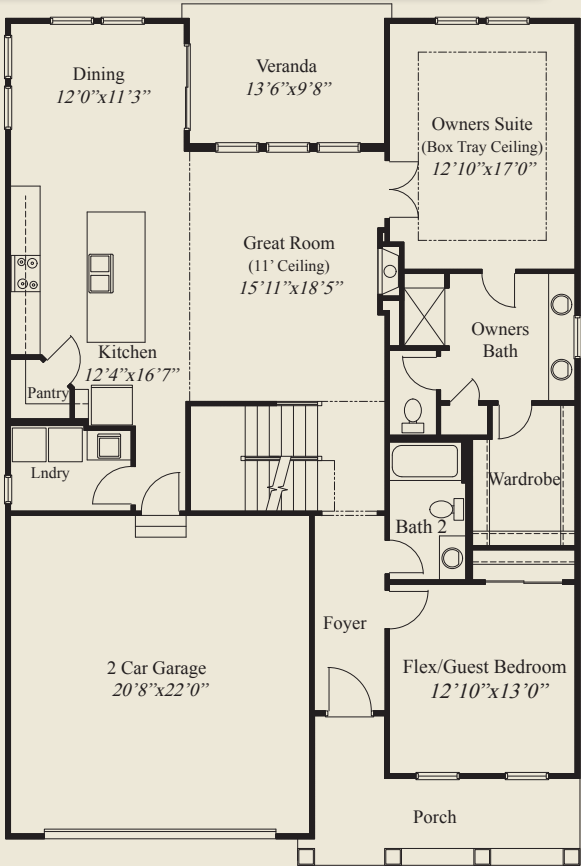
Bungalow

Plan Information

- 1,949 SqFt + Optional Finished LL
- 3 Bedrooms
- 3 Baths
- 2 Car Garage
- 9' Ceilings on First Floor
- 11' Ceiling Great Room
- Large Kitchen w/Walk-in Pantry
- Box Tray Ceiling in Owners Suite
- Owners Suite w/Oversized Shower & Wardrobe
- First Floor Flex/Guest Bedroom
- Covered Rear Veranda
- 2nd Floor Loft, 3rd Bedroom, Full Bath
- Full Basement for Optional Finish



SECOND FLOOR 387 SQ.FT.



FIRST FLOOR 1,562 SQ.FT.



© Romanelli & Hughes Building Co.
All home plans present on this brochure are protected by copyright. Reproduction either in whole or in part without written permission is strictly prohibited. All renderings and floor plans are artists' conceptions and are not intended to be an actual depiction of the home or its surroundings.