



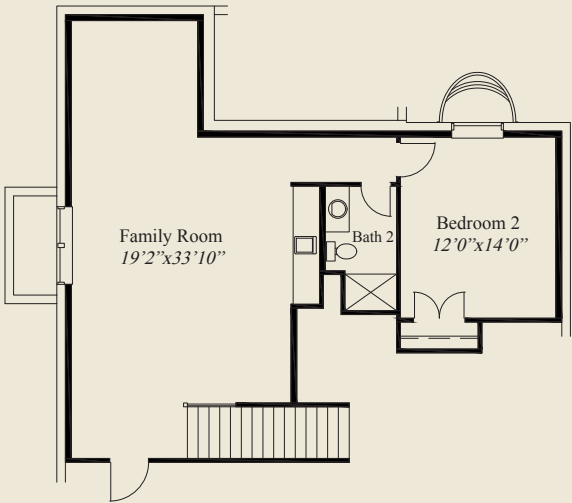
Farmhouse



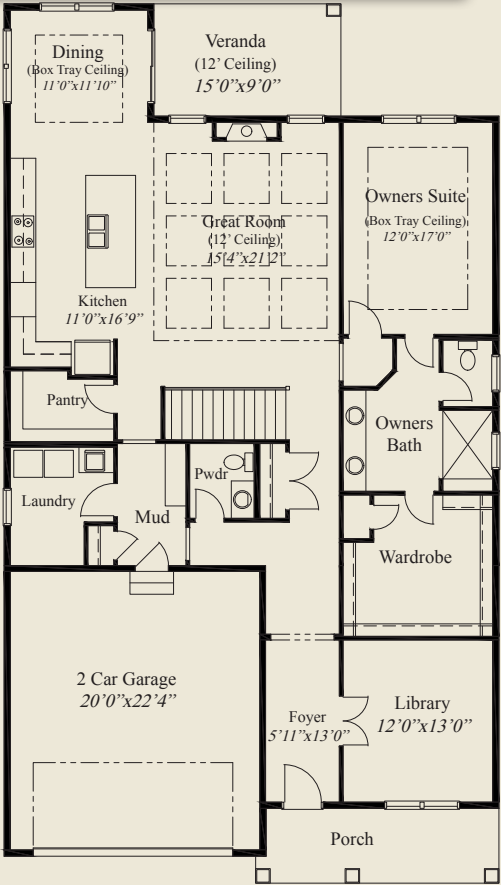
Craftsman

Plan Information

- 1,920 SqFt + Optional 825 Finished LL
- 1 Bedroom
- 1 1/2 Baths
- 2 Car Garage
- 10' Ceilings & 8' Doors First Floor
- 12' Decorative Ceiling Great Room
- Box Tray Ceilings in Dining & Owners Suite
- Kitchen w/Large Walk-in Pantry
- Spacious Owners Suite w/Oversized Shower
- Huge Owners Wardrobe
- Library w/French Doors
- Covered Veranda w/12' Ceiling
- Large Laundry
- Private Mud Entry
- Opt. Finished LL w/Family Rm, Bedroom, Bath



OPTIONAL FINISHED LOWER LEVEL 825 SQ.FT.



FIRST FLOOR 1,920 SQ.FT.



© Romanelli & Hughes Building Co.  
All home plans present on this brochure are protected by copyright. Reproduction either in whole or in part without written permission is strictly prohibited. All renderings and floor plans are artists' conceptions and are not intended to be an actual depiction of the home or its surroundings.