

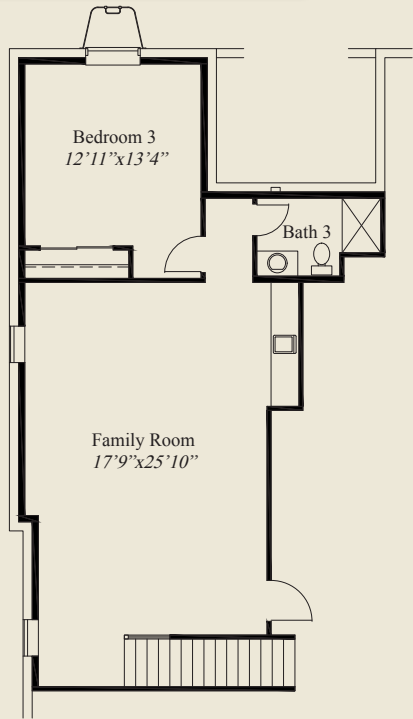


- Plan Information**
- 3,023 SqFt
  - 3 Bedrooms
  - 3 1/2 Baths
  - 2 Car Garage
  - Large Front Porch
  - 10' Ceilings, 8' Doors on First Floor
  - 12' Detailed Ceiling Great Room
  - Tray Ceilings in Foyer, Dining, Owners Suite
  - Open Kitchen w/Walk-in Pantry
  - Mud Rm w/Bench, Closet w/Laundry Access
  - First Floor Guest Suite w/Private Bath
  - Owners Suite w/Large Shower & Wardrobe
  - Wardrobe w/Laundry Access
  - Rear Covered Veranda
  - Sun Room
  - Private Library w/Glass French Doors
  - Finished LL Family Room, 3rd Bedroom, Bath

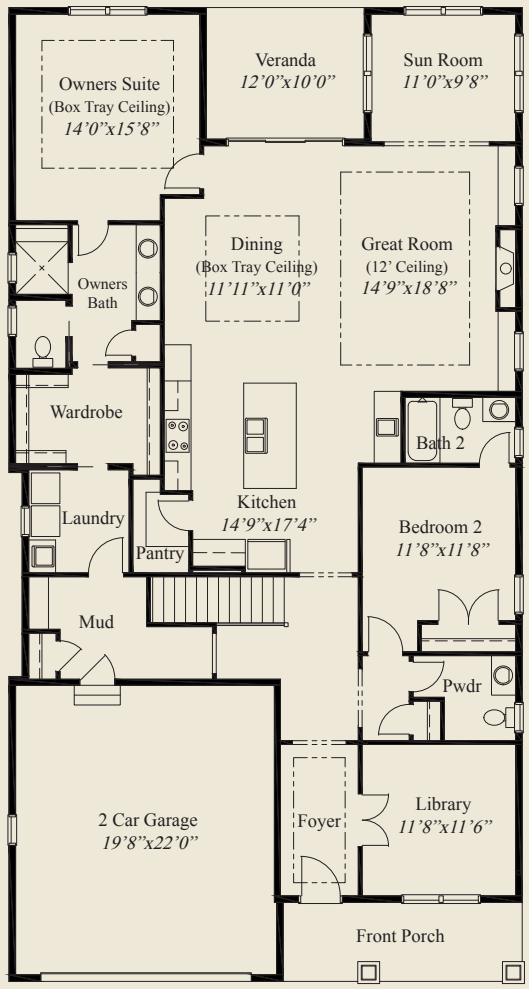
**Home Information**

This custom ranch features a large front porch, 1st flr 10' ceilings, 8' doors, and a 12' detailed ceiling great room. The mud entry includes a bench, and a closet w/laundry access. Tray ceilings adorn the foyer, dining & owners suite. The kitchen includes a large walk-in pantry. The owners suite features an oversize shower and huge wardrobe w/laundry access. A 1st flr guest suite w/private bath, a private library, sun room, a covered veranda, and a finished LL w/huge family room and 3rd bedroom and full bath, all add to the appeal of this beautiful home.

© Romanelli & Hughes Building Co.  
 All home plans present on this brochure are protected by copyright. Reproduction either in whole or in part without written permission is strictly prohibited. All renderings and floor plans are artists' conceptions and are not intended to be an actual depiction of the home or its surroundings.



LOWER LEVEL 840 SQ.FT.



FIRST FLOOR 2,183 SQ.FT.

