

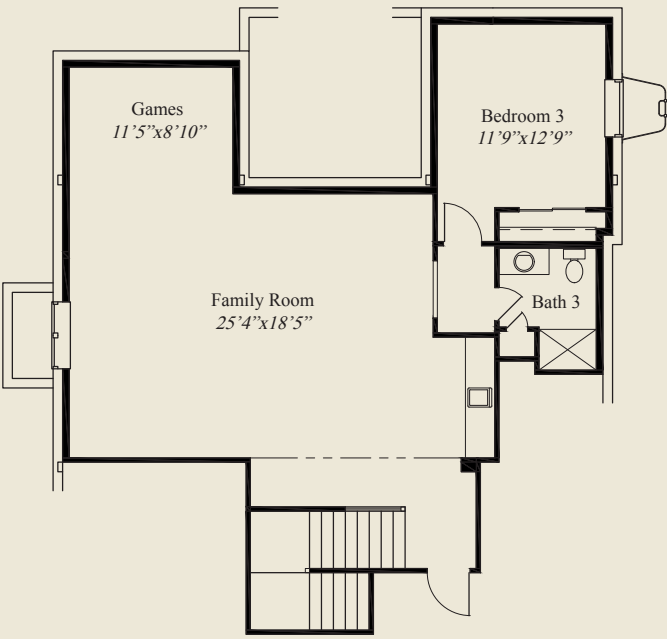


- Plan Information**
- 3,329 SqFt
 - 3 Bedrooms
 - 3 Baths
 - 2 Car Garage
 - Large Front Porch
 - 10' Ceilings, 8' Doors on First Floor
 - 12' Beamed Ceiling Great Room
 - Tray Ceilings in Foyer, Dining, Owners Suite
 - Open Kitchen w/Walk-in Chefs Pantry
 - Mud Rm w/Bench & Closet
 - First Floor Guest Room
 - Owners Suite w/Large Shower & Wardrobe
 - Rear Covered Veranda
 - Private Library w/Glass French Doors & Built-ins
 - Finished LL Family Room, 3rd Bedroom, Bath

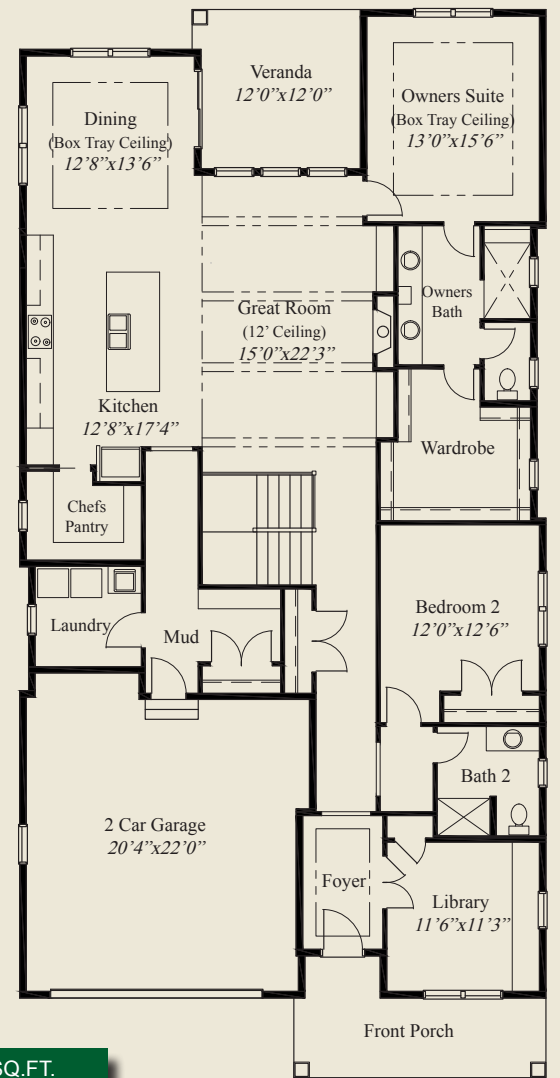
Home Information

This custom ranch features a large front porch, 1st flr 10' ceilings, 8' doors, and a 12' beamed ceiling great room. The mud entry includes a bench & closet. Tray ceilings adorn the foyer, dining & owners suite. The kitchen includes a large walk-in chefs pantry. The owners suite features an oversize shower and huge wardrobe. A 1st flr guest suite w/private bath, a library w/glass french doors & built-ins, a covered veranda, and a finished LL w/huge family room and 3rd bedroom and full bath, all add to the appeal of this beautiful home.

© Romanelli & Hughes Building Co. All home plans present on this brochure are protected by copyright. Reproduction either in whole or in part without written permission is strictly prohibited. All renderings and floor plans are artists' conceptions and are not intended to be an actual depiction of the home or its surroundings.



LOWER LEVEL 1,025 SQ.FT.



FIRST FLOOR 2,304 SQ.FT.

