



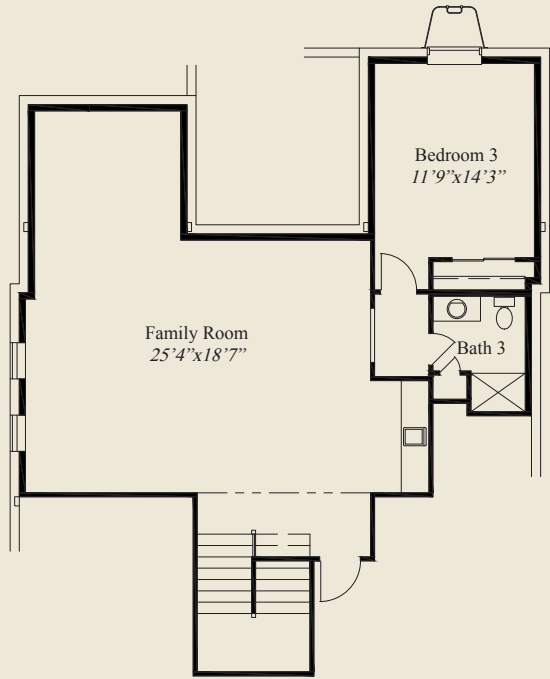
- Plan Information**
- 3,308 SqFt
 - 3 Bedrooms
 - 3 Baths
 - 2 Car Garage (Oversize)
 - Large Front Porch
 - 10' Ceilings, 8' Doors on First Floor
 - 12' Beamed Ceiling Great Room
 - Tray Ceilings in Foyer, Dining, Owners Suite
 - Open Kitchen w/ Large Island & Chefs Pantry
 - Mud Rm w/ Bench, Closet, Adjacent Laundry
 - Owners Suite w/ Large Shower & Wardrobe
 - Rear Covered Veranda
 - First Floor Guest Suite
 - Library w/ Glass French Doors
 - Finished LL Family Room, 3rd Bedroom, Bath



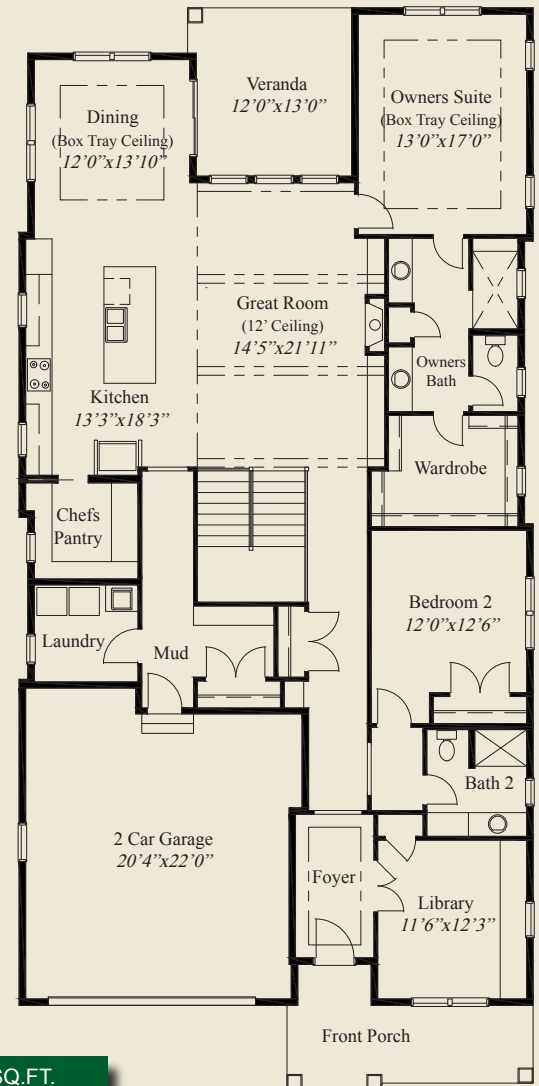
Home Information

This custom ranch features a large front porch, 1st flr 10' ceilings, 8' doors, and a 12' beamed ceiling great room. The mud entry includes a bench, closet, and adjacent laundry. Tray ceilings adorn the foyer, dining & owners suite. The kitchen includes a large chefs pantry. The owners suite features an oversize shower and huge wardrobe. A 1st flr guest room, a library w/ glass french doors, a covered veranda, and a finished LL w/ huge family room and 3rd bedroom and full bath, all add to the appeal of this beautiful home.

© Romanelli & Hughes Building Co. All home plans present on this brochure are protected by copyright. Reproduction either in whole or in part without written permission is strictly prohibited. All renderings and floor plans are artists' conceptions and are not intended to be an actual depiction of the home or its surroundings.



LOWER LEVEL 1,004 SQ.FT.



FIRST FLOOR 2,304 SQ.FT.

