



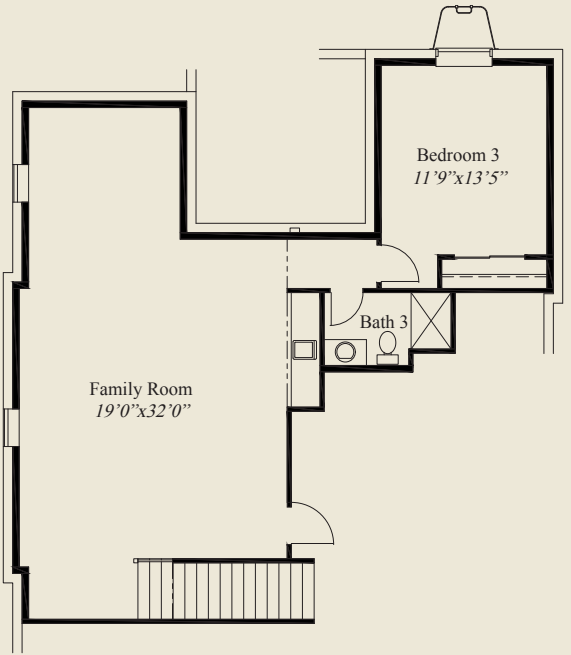
- Plan Information**
- 2,928 SqFt
 - 3 Bedrooms
 - 3 1/2 Baths
 - 2 Car Garage (Oversize)
 - Large Front Porch
 - 10' Ceilings, 8' Doors on First Floor
 - 12' Ceiling Great Room
 - Tray Ceilings in Foyer, Dining, Owners Suite
 - Open Kitchen w/ Large Island
 - Mud Rm w/ Bench, Chefs Pantry & Pocket Office
 - Owners Suite w/ Large Shower & Wardrobe
 - Rear Covered Veranda
 - First Floor Guest Suite w/ Private Bath
 - Finished LL Family Room, 3rd Bedroom, Bath



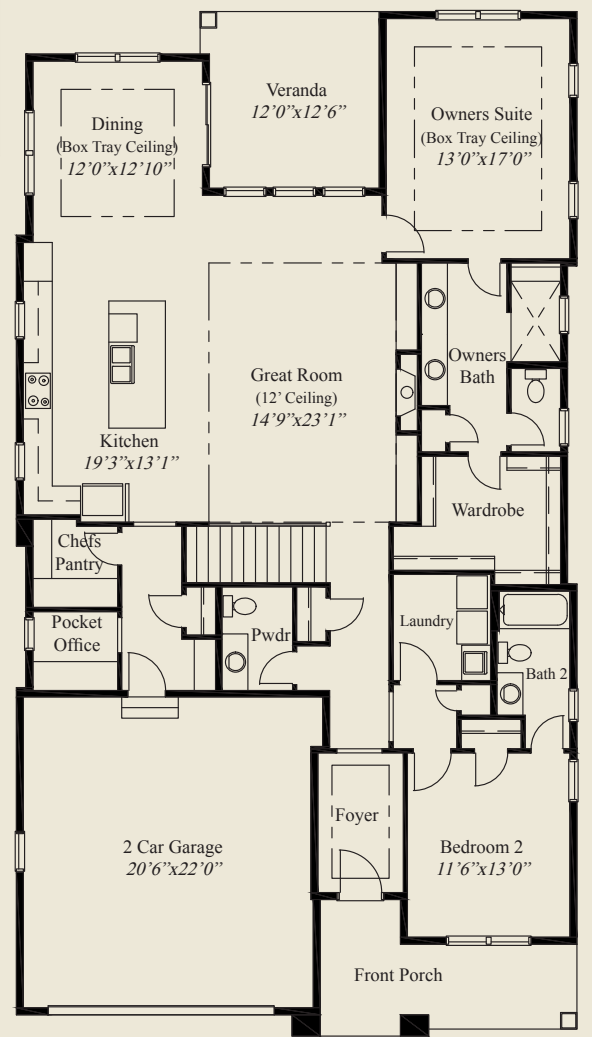
Home Information

This custom ranch features a large front porch, first floor 10' ceilings, 8' doors, and a 12' ceiling great room. The mud entry includes a bench, closet, and adjacent chefs pantry & pocket office. Tray ceilings adorn the foyer, dining & owners suite. The spacious kitchen includes a large island. The owners suite features an oversize shower and huge wardrobe. A first floor guest suite w/private bath, a covered rear veranda, and a finished lower level w/huge family room and 3rd bedroom and full bath, all add to the appeal of this beautiful home.

© Romanelli & Hughes Building Co.
All home plans present on this brochure are protected by copyright. Reproduction either in whole or in part without written permission is strictly prohibited. All renderings and floor plans are artists' conceptions and are not intended to be an actual depiction of the home or its surroundings.



LOWER LEVEL 919 SQ.FT.



FIRST FLOOR 2,009 SQ.FT.

