



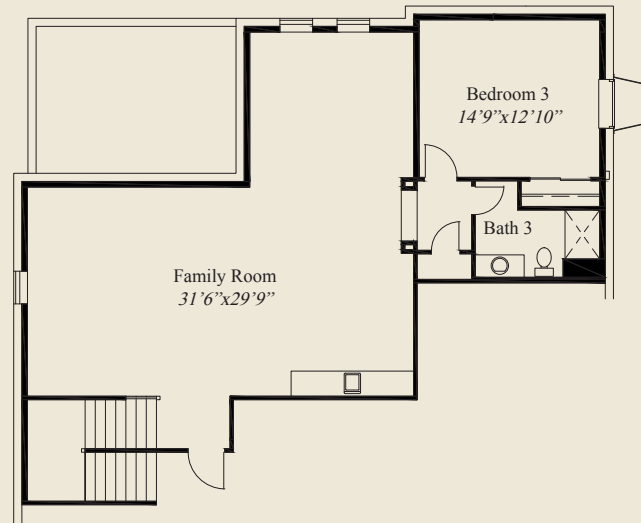
**Plan Information**

- 3,567 SqFt
- 3 Bedrooms
- 3 1/2 Baths
- 2 Car Garage (Oversize)
- 10' Ceilings, 8' Doors on First Floor
- Beamed 12' Ceiling Great Room & Kitchen
- Decorative Ceilings in Foyer, Dining, Owners Suite
- Kitchen w/Chefs Pantry
- Library w/Glass French Doors
- Private Mud Entry w/Bench, Closet
- Owners Suite w/Oversize Shower & Wardrobe
- Wardrobe w/Laundry Access Door
- Covered Veranda w/Sloped Ceiling
- First Floor Guest Suite w/Private Bath
- Finished LL Family Room, 3rd Bedroom, Bath

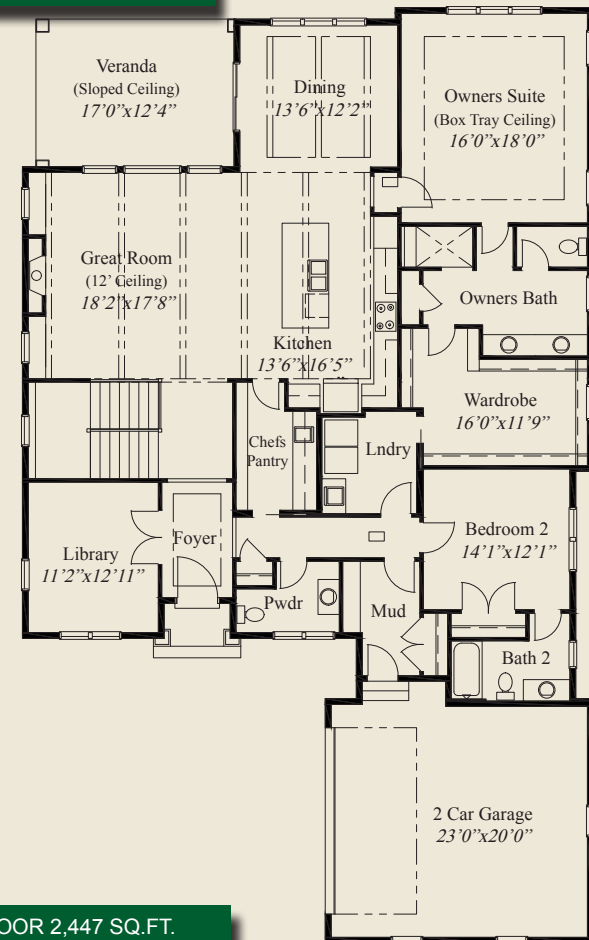


**Home Information**

This custom ranch features first floor 10' ceilings, 8' doors, and a beamed 12' ceiling great room and kitchen. A private mud entry includes a bench & closet. Decorative ceilings adorn the foyer, dining & owner's suite. The spacious kitchen includes a huge chefs pantry. The owners suite features an oversize shower, and a huge wardrobe w/laundry access door. A first floor guest suite w/private bath, library w/glass french doors, covered veranda w/sloped ceiling, and a finished lower level w/3rd bedroom and full bath, all add to the appeal of this beautiful home.



LOWER LEVEL 1,120 SQ.FT.



FIRST FLOOR 2,447 SQ.FT.

© Romanelli & Hughes Building Co.  
 All home plans present on this brochure are protected by copyright. Reproduction either in whole or in part without written permission is strictly prohibited. All renderings and floor plans are artists' conceptions and are not intended to be an actual depiction of the home or its surroundings.

