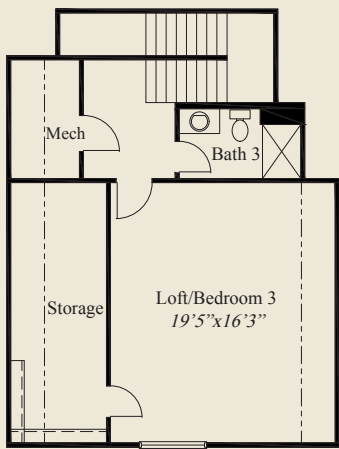




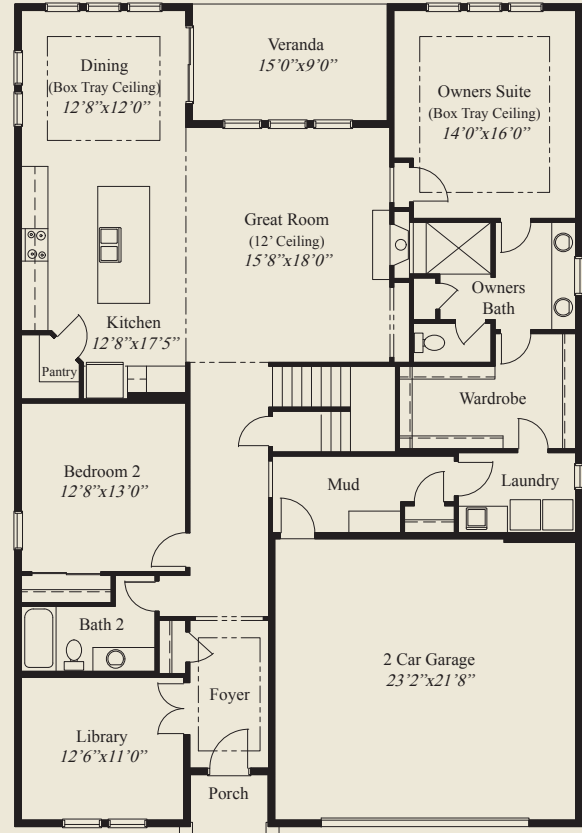
- ### Plan Information
- 2,609 SqFt
 - 3 Bedrooms
 - 3 Baths
 - 2 Car Garage
 - Easy Access Low Step Entry
 - 10' First Floor Ceilings, 8' Doors
 - 12' Ceiling Great Room
 - Foyer, Dining, Owners Suite w/Tray Ceilings
 - Owners Bath w/Oversize Shower
 - Spacious Wardrobe w/Opt. Door to Laundry
 - Kitchen w/Walk-in Pantry
 - Rear Covered Veranda
 - 1st Floor Guest Bedroom
 - Library w/Glass French Doors
 - Mud Room w/Bench & Closet
 - 2nd Floor Loft/Bedroom, Full Bath and Storage

Home Information

This custom patio home features easy access low step entry, and a 12' ceiling great room. 10' ceilings & 8' doors are throughout the first floor. Tray ceilings adorn the foyer, owners suite and dining. The kitchen includes a walk-in pantry. The owners suite has an oversized shower and huge wardrobe w/opt. laundry access door. A covered veranda, first floor guest bedroom, library w/glass french doors, a private mud entry w/bench & closet, and a 2nd floor loft/bedroom w/full bath and storage closet, complete this beautiful home.



SECOND FLOOR 619 SQ.FT.



FIRST FLOOR 1,990 SQ.FT.

© Romanelli & Hughes Building Co. All home plans present on this brochure are protected by copyright. Reproduction either in whole or in part without written permission is strictly prohibited. All renderings and floor plans are artists' conceptions and are not intended to be an actual depiction of the home or its surroundings.

