



Plan Information

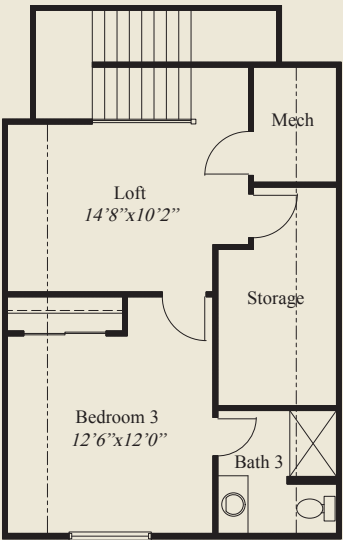
- 2,476 SqFt
- 3 Bedrooms
- 3 Baths
- 2 Car Garage
- Low Step Entry Easy Access Living
- Mud Room w/Bench, Closet, Laundry Access
- Foyer, Dining, Owners Suite w/Tray Ceilings
- 12' Ceiling Great Room
- 10' Ceilings, 8' Doors on 1st Floor
- Kitchen w/Walk-in Pantry
- 1st Flr Guest Bedroom
- Library w/Glass French Doors
- Rear Covered Veranda w/Sloped Ceiling
- Owners Suite w/Oversize Curbless Shower
- Spacious Wardrobe w/Door to Laundry
- 2nd Floor w/Loft, Bedroom, Full Bath, Storage



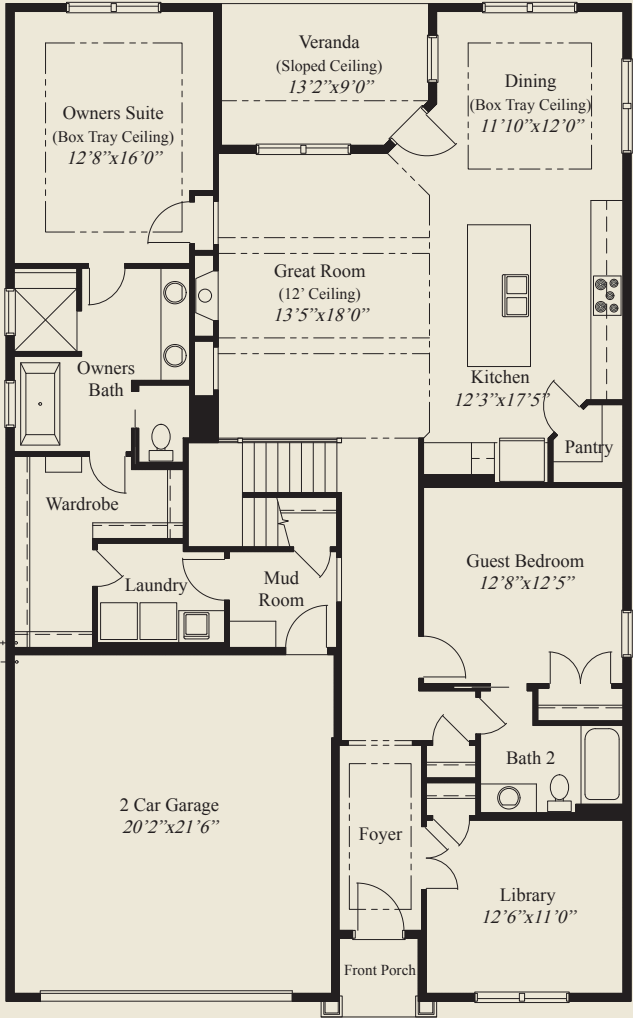
Home Information

This custom patio home features low step entry, easy access living, a 12' ceiling great room, and 10' ceilings and 8' doors. Tray ceilings adorn the foyer, owners suite, and dining. The kitchen includes a walk-in pantry. The spacious dining area includes a box tray ceiling. The owners suite includes an oversized curbless shower and a large wardrobe w/laundry access door. A 1st flr guest bedroom, library w/glass french doors, a private mud entry w/bench, closet & laundry access, a rear covered veranda w/sloped ceiling, and a second floor w/ large loft, bedroom, full bath & extra storage, complete this beautiful home.

© Romanelli & Hughes Building Co.
All home plans present on this brochure are protected by copyright. Reproduction either in whole or in part without written permission is strictly prohibited. All renderings and floor plans are artists' conceptions and are not intended to be an actual depiction of the home or its surroundings.



SECOND FLOOR 556 SQ.FT.



FIRST FLOOR 1,920 SQ.FT.