



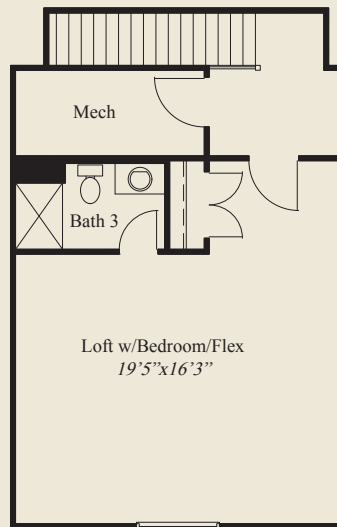
Plan Information

- 2,609 SqFt
- 3 Bedrooms
- 3 Baths
- 3 Car Garage (Oversize)
- Easy Access Low Step Entry
- Mud Room w/Bench & Closet
- 10' First Floor Ceilings, 8' Doors
- Foyer, Dining, Owners Suite w/Tray Ceilings
- 12' Ceiling Great Room
- Kitchen w/Pocket Office & Chefs Pantry
- Rear Covered Veranda
- Owners Bath w/Oversize Shower
- Spacious Wardrobe w/Opt. Door to Laundry
- 1st Floor Guest Bedroom w/Double Doors
- 2nd Floor Loft w/Bedroom /Flex, Full Bath



Home Information

This custom patio home features easy access low step entry, and a 12' ceiling great room. 10' ceilings & 8' doors are throughout the first floor. Tray ceilings adorn the foyer, owners suite and dining. The kitchen includes a pocket office & chefs pantry. The owners suite has an oversized shower and huge wardrobe w/laundry access door. A covered veranda, first floor guest bedroom w/ double doors, a private mud entry w/bench & closet, and a 2nd floor loft bedroom/flex room w/full bath, complete this beautiful home.



SECOND FLOOR 619 SQ.FT.



FIRST FLOOR 1,990 SQ.FT.

© Romanelli & Hughes Building Co. All home plans present on this brochure are protected by copyright. Reproduction either in whole or in part without written permission is strictly prohibited. All renderings and floor plans are artists' conceptions and are not intended to be an actual depiction of the home or its surroundings.

