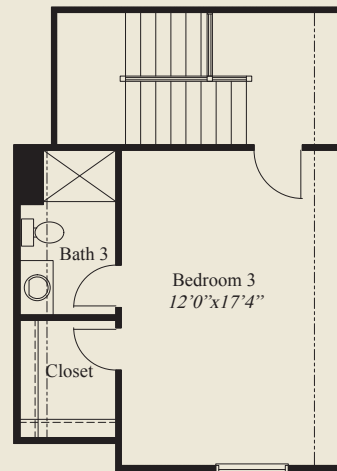




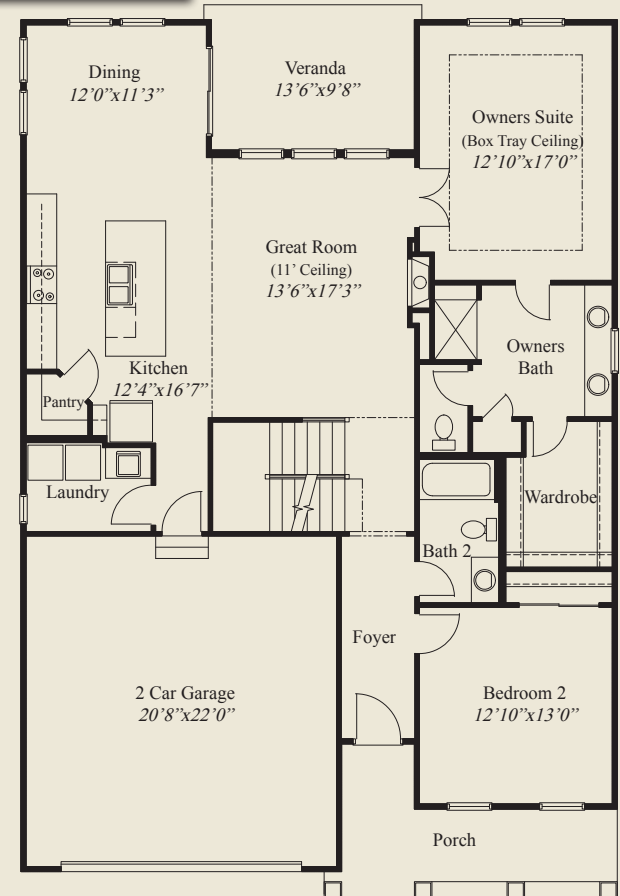
- ### Plan Information
- 1,949 SqFt
 - 3 Bedrooms
 - 3 Baths
 - 2 Car Garage
 - Easy Access Living, Large Front Porch
 - 11' Ceiling in Great Room
 - Large Kitchen
 - Owners Suite w/ Tray Ceiling, Large Wardrobe
 - Covered Rear Veranda
 - First Floor Guest Bedroom
 - 2nd Floor Loft, 3rd Bedroom, Full Bath
 - Owners Bath w/ Seated Shower
 - Full Basement w/ 9' Poured Walls for Optional Finish

Home Information

This custom patio home features easy access living, a large front porch, an 11' ceiling great room and an adjacent rear veranda. 9' ceilings are throughout the 1st floor. The owners suite has a box tray ceiling, an oversized shower w/ seat, french door entry, and a large wardrobe. A first floor guest bedroom, switchback stairs to a second floor loft, and 3rd bedroom w/ large walk-in closet and a full bath to complete this beautiful home.



SECOND FLOOR 387 SQ.FT.



FIRST FLOOR 1,562 SQ.FT.

© Romanelli & Hughes Building Co. All home plans present on this brochure are protected by copyright. Reproduction either in whole or in part without written permission is strictly prohibited. All renderings and floor plans are artists' conceptions and are not intended to be an actual depiction of the home or its surroundings.

