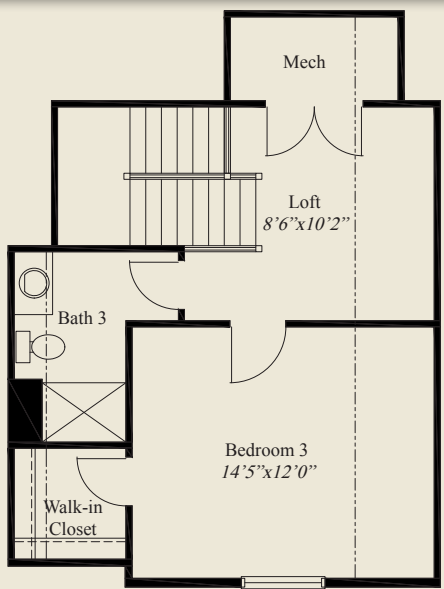
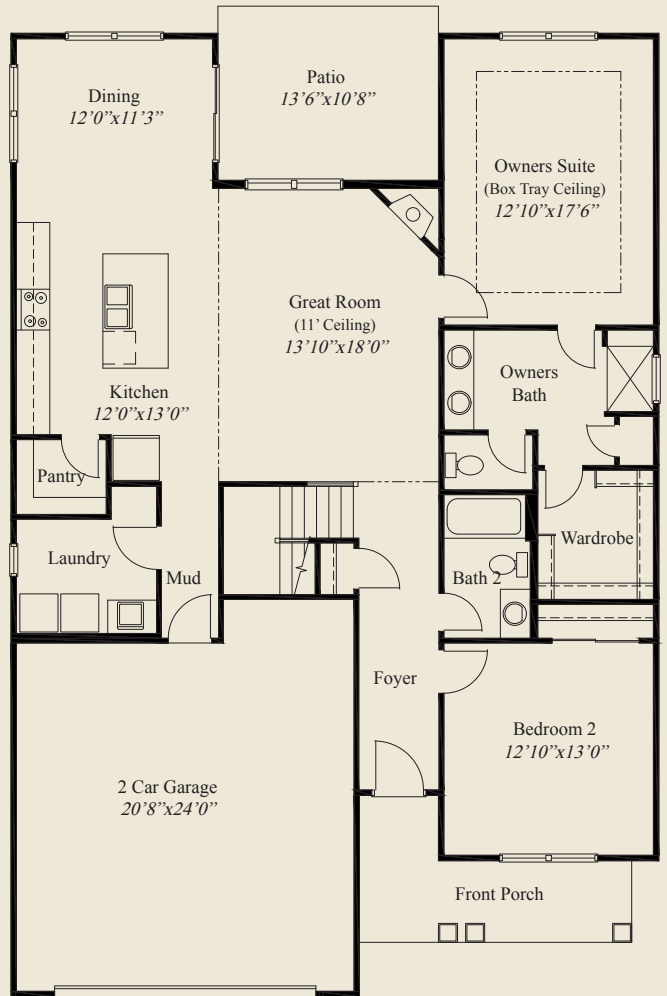




- Plan Information**
- 1,987 SqFt
  - 3 Bedroom
  - 3 Baths
  - 2 Car Garage
  - Easy Access Living - On Slab
  - Large Front Porch
  - 9' Ceilings on First Floor
  - Great Room w/11' Ceiling, Corner Fireplace
  - Large Kitchen w/Walk-in Pantry
  - Owners Suite w/Box Tray Ceiling
  - Owners Bath w/Seated Shower
  - First Floor Guest Room
  - Rear Patio
  - Second Floor Loft
  - Second Floor Guest Room w/Walk-in Closet



SECOND FLOOR 432 SQ.FT.



FIRST FLOOR 1,566 SQ.FT.



© Romanelli & Hughes Building Co.  
All home plans present on this brochure are protected by copyright. Reproduction either in whole or in part without written permission is strictly prohibited. All renderings and floor plans are artists' conceptions and are not intended to be an actual depiction of the home or its surroundings.