



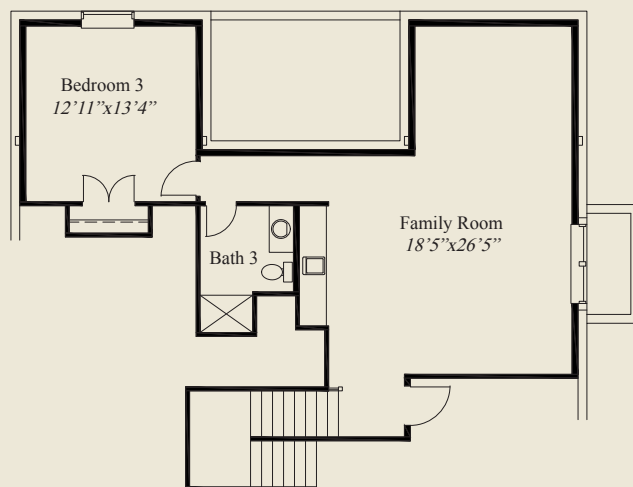
**Plan Information**

- 3,066 SqFt
- 3 Bedrooms
- 3 1/2 Baths
- 2 Car Garage (Oversize)
- Mud Room w/ Bench
- Great Room w/ 12' Ceiling
- Kitchen w/Walk-in Pantry
- Covered Rear Veranda w/Sloped Ceiling
- Owners Suite w/Tray Ceiling, Shower, Large Wardrobe
- Laundry w/Optional Wardrobe Access
- First Floor Guest Bedroom w/Private Bath
- Library w/French Doors
- Finished LL w/Family Room, 3rd Bedroom, Full Bath

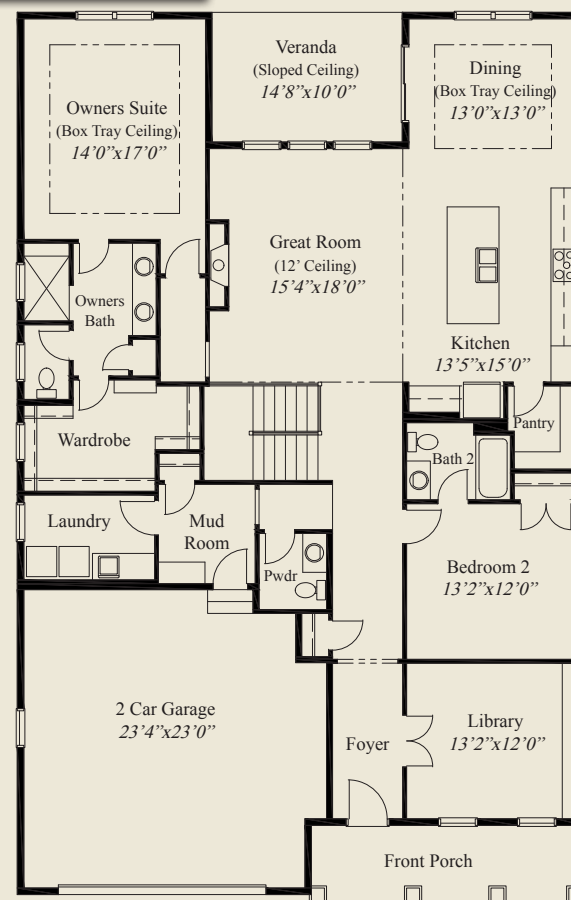
**Home Information**

This custom ranch features first floor 10' ceilings and 8' doors, a 12' ceiling great room, and detailed tray ceilings in the dining and owners suite. The library has french doors and the spacious kitchen includes a walk-in pantry. The owners suite has an oversize shower and a large wardrobe with optional access door to the adjacent laundry. A first floor guest bedroom w/private bath, covered rear veranda, mud room w/ bench, and a finished lower level w/family room, 3rd bedroom & full bath, complete this beautiful home.

© Romanelli & Hughes Building Co. All home plans present on this brochure are protected by copyright. Reproduction either in whole or in part without written permission is strictly prohibited. All renderings and floor plans are artists' conceptions and are not intended to be an actual depiction of the home or its surroundings.



LOWER LEVEL 890 SQ.FT.



FIRST FLOOR 2,176 SQ.FT.

