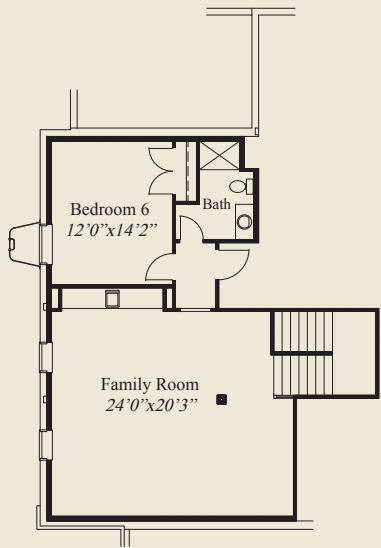


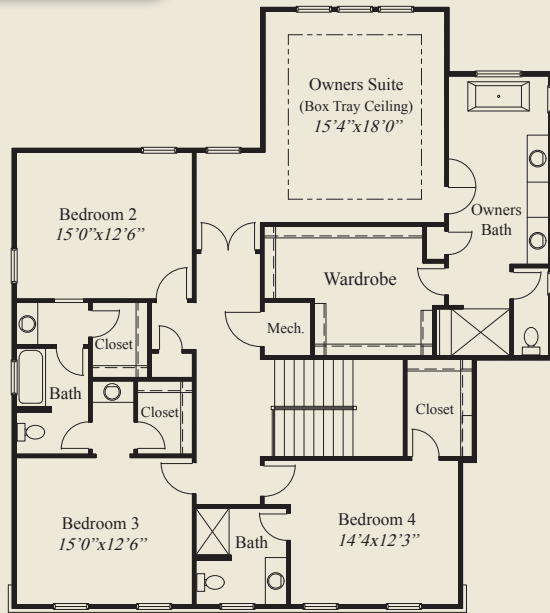


This custom home features 1st floor 11' ceilings & 8' doors. The foyer has glass french doors to the library and a guest suite w/private shower adjoined by the powder room. A decorative ceiling adorns the great rm, kitchen and dining. The huge kitchen includes a walk-in pantry. The 2nd flr owners suite has a box tray ceiling, free standing tub, large shower and spacious wardrobe. A covered veranda, 3 upstairs bedrooms w/walk-in closets, and a finished LL w/family room, 6th bedroom & full bath, complete this beautiful home.

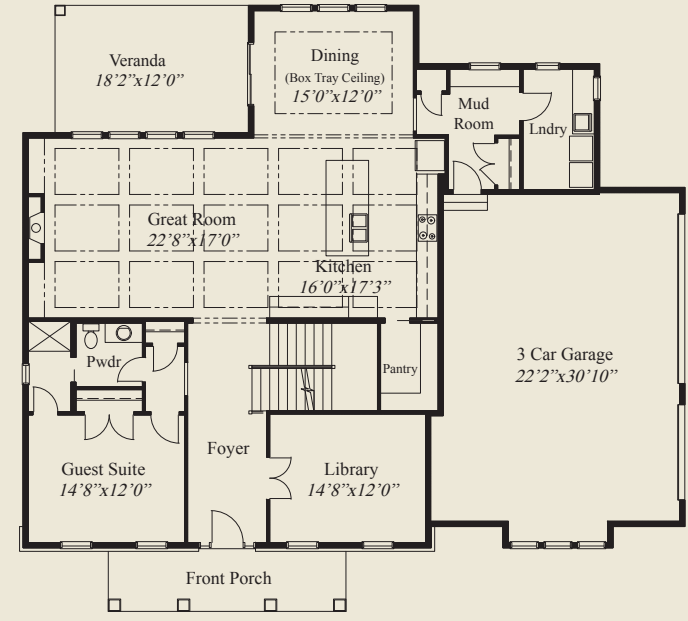
- ### Plan Information
- 4,655 SqFt
 - 6 Bedrooms
 - 5 Baths
 - 3 Car Garage (Oversize)
 - 11' Ceilings, 8' Doors on 1st Floor
 - Great Room and Kitchen w/Decorative Beam Ceilings
 - Large Walk-in Pantry
 - Dining w/Tray Ceiling
 - 1st Flr Guest Suite w/Private Shower
 - Large Front Porch
 - Mud Room w/Bench & Closet
 - Library w/Glass French Doors
 - Covered Veranda
 - 9' Ceilings on 2nd Floor
 - Owners Bath w/Free Standing Tub & Huge Shower
 - Owners Suite w/Tray Ceilings and Large Wardrobe
 - Spacious Upstairs Bedrooms all w/Walk-in Closets
 - Finished LL Family Rm w/6th Bedroom, Bath



FINISHED LL 837 SQ.FT.



SECOND FLOOR 1,899 SQ.FT.



FIRST FLOOR 1,919 SQ.FT.



© Romanelli & Hughes Building Co.
 All home plans present on this brochure are protected by copyright. Reproduction either in whole or in part without written permission is strictly prohibited. All renderings and floor plans are artists' conceptions and are not intended to be an actual depiction of the home or its surroundings.