

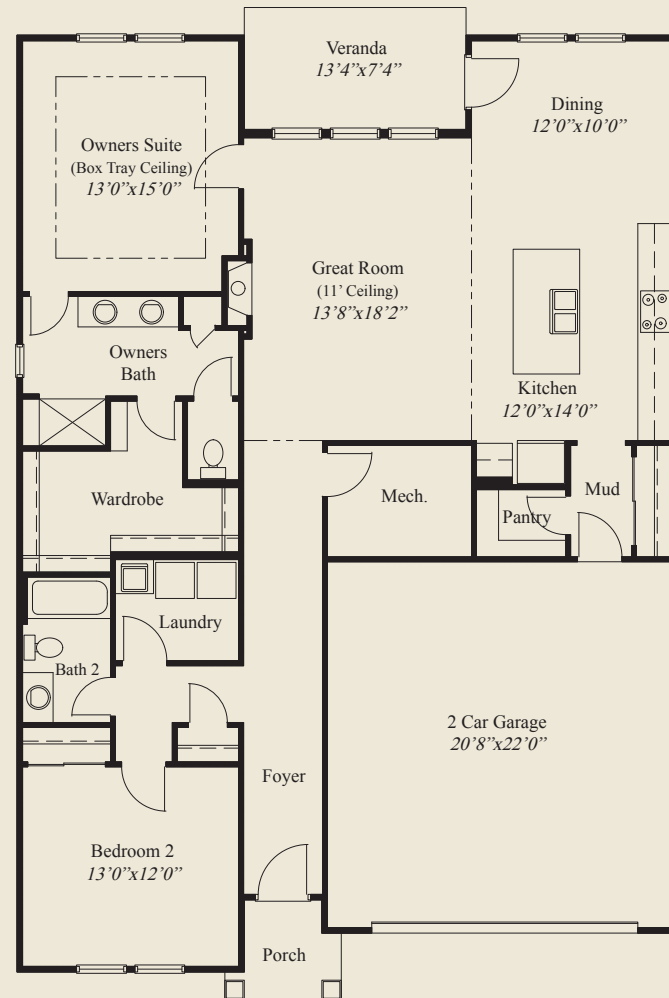


Home Information

This custom patio home features easy access living, open living and entertainment space, an 11' ceiling great room & 9' ceilings are throughout the 1st floor. The spacious kitchen includes a walk-in pantry. The owners suite has a box tray ceiling, oversized shower w/seat, and a large wardrobe. A rear covered veranda, guest bedroom, and a private mud entry, complete this beautiful home

Plan Information

- 1,619 SqFt
- 2 Bedrooms
- 2 Baths
- 2 Car Garage
- Low Step Entry, Easy Access Living - On Slab
- 11' Ceiling in Great Room
- 9' Ceilings on First Floor
- Large Kitchen w/Walk-in Pantry
- Owners Suite w/Box Tray Ceiling
- Owners Bath w/Seated Shower
- Huge Wardrobe
- Guest Bedroom
- Private Mud Entry
- Covered Rear Veranda



FIRST FLOOR 1,619 SQ.FT.

© Romanelli & Hughes Building Co.
All home plans present on this brochure are protected by copyright. Reproduction either in whole or in part without written permission is strictly prohibited. All renderings and floor plans are artists' conceptions and are not intended to be an actual depiction of the home or its surroundings.

