

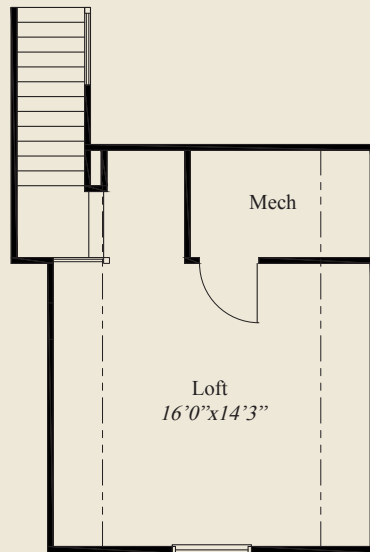


- ### Plan Information
- 1,906 SqFt
 - 2 Bedrooms
 - 2 Baths
 - 2 Car Garage
 - Easy Access Living - On Slab
 - Large Front Porch
 - 9' Ceilings on First Floor
 - 11' Ceiling in Great Room
 - Large Kitchen w/Walk-in Pantry
 - Owners Suite w/Box Tray Ceiling
 - Owners Bath w/Seated Shower
 - First Floor Flex Bedroom/Library w/Closet
 - Covered Rear Veranda
 - Private Mud Entry
 - Large Second Floor Loft

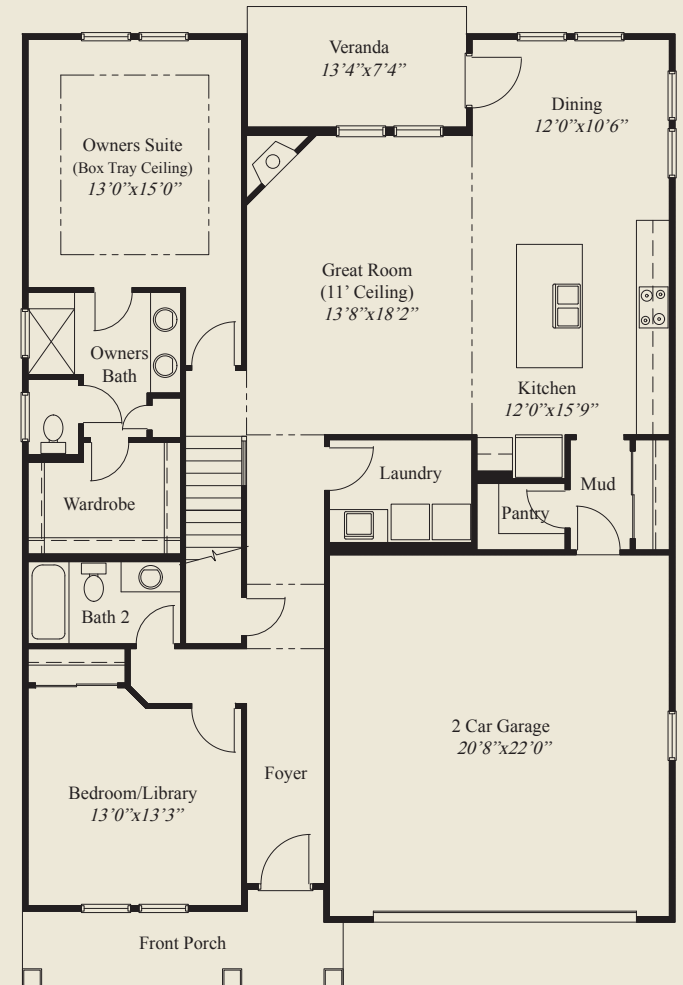


Home Information

This custom patio home features easy access living, open living and entertainment space, an 11' ceiling great room w/corner fireplace & adjacent covered veranda, and 9' ceilings on the first floor. The spacious kitchen includes a walk-in pantry. The owners suite has a box tray ceiling, oversized shower w/ seat, and a large wardrobe. A first floor flex bedroom/library, private mud entry, and large second floor loft, complete this beautiful home.



SECOND FLOOR 328 SQ.FT.



FIRST FLOOR 1,578 SQ.FT.

© Romanelli & Hughes Building Co.
 All home plans present on this brochure are protected by copyright. Reproduction either in whole or in part without written permission is strictly prohibited. All renderings and floor plans are artists' conceptions and are not intended to be an actual depiction of the home or its surroundings.

