



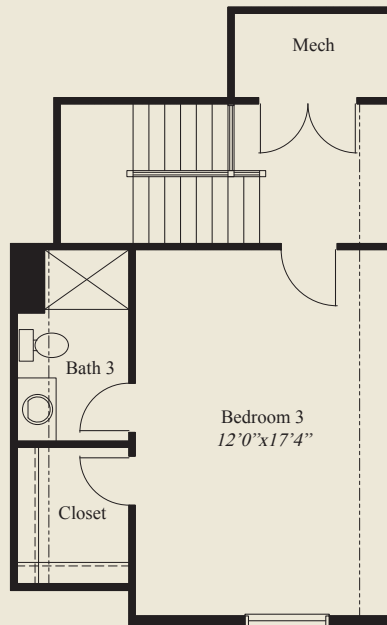
Plan Information

- 1,955 SqFt
- 3 Bedrooms
- 3 Baths
- 2 Car Garage
- Easy Access Living - On Slab
- First Floor Guest Bedroom
- 9' Ceilings on First Floor
- 11' Ceiling in Great Room
- Large Kitchen w/Walk-in Pantry
- Owners Suite w/Box Tray Ceiling
- Owners Bath w/Seated Shower
- Huge Wardrobe
- Rear Veranda
- Mud Entry w/Closet
- 2nd Floor Bedroom w/Full Bath, Walk-in Closet

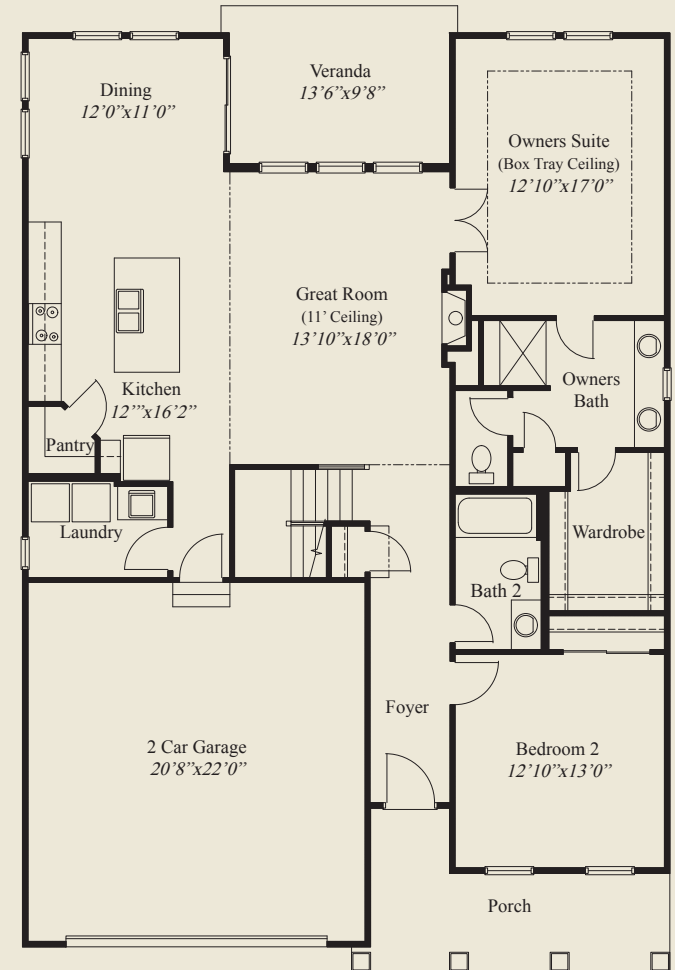
Home Information

This custom patio home features easy access living, a large front porch, an 11' ceiling great room & rear covered veranda. 9' ceilings are throughout the 1st floor. The spacious kitchen includes a walk-in pantry. The owners suite has a box tray ceiling, oversized shower w/ seat, and a large wardrobe. A first floor guest bedroom and a second floor w/3rd bedroom w/ large walk-in closet and full bath, complete this beautiful home.

© Romanelli & Hughes Building Co. All home plans present on this brochure are protected by copyright. Reproduction either in whole or in part without written permission is strictly prohibited. All renderings and floor plans are artists' conceptions and are not intended to be an actual depiction of the home or its surroundings.



SECOND FLOOR 415 SQ.FT.



FIRST FLOOR 1,540 SQ.FT.

