



Plan Information

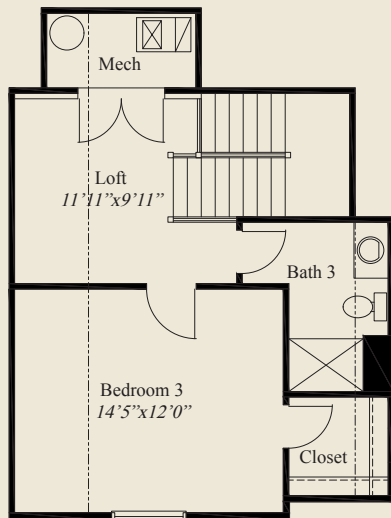
- 2,003 SqFt
- 3 Bedrooms
- 3 Baths
- 3 Car Garage
- Easy Access Living, Large Front Porch
- 9' Ceilings on First Floor
- 11' Ceiling in Great Room
- Large Kitchen w/Walk-in Pantry
- Owners Suite w/Tray Ceiling, Large Wardrobe
- Owners Bath w/Seated Shower
- First Floor Guest Room
- Rear Patio
- 2nd Flr Loft, 3rd Bedroom, Full Bath

Home Information

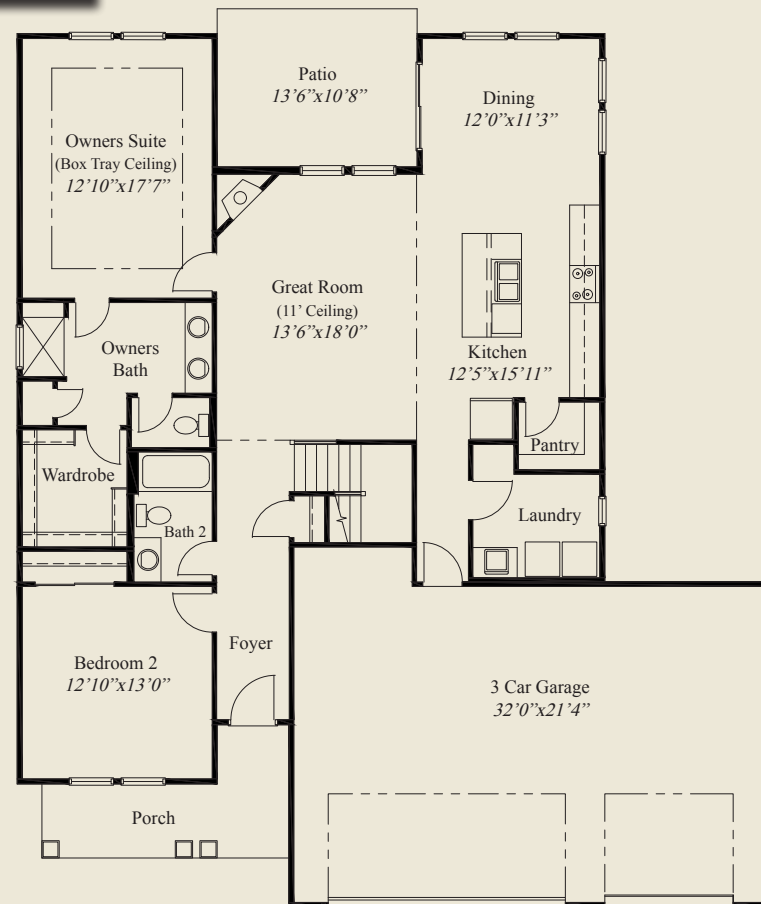
This custom patio home features easy access living, a large front porch, an 11' ceiling great room w/ corner fireplace & adjacent rear patio. 9' ceilings are throughout the 1st floor. The spacious kitchen includes a walk-in pantry. The owners suite has a box tray ceiling, and oversized shower w/seat, and a large wardrobe. A first floor guest bedroom, switchback stairs to a second floor loft, and 3rd bedroom w/large walk-in closet and full bath, complete this beautiful home.

© Romanelli & Hughes Building Co.

All home plans present on this brochure are protected by copyright. Reproduction either in whole or in part without written permission is strictly prohibited. All renderings and floor plans are artists' conceptions and are not intended to be an actual depiction of the home or its surroundings.



SECOND FLOOR 447 SQ.FT.



FIRST FLOOR 1,566 SQ.FT.

