



Plan Information

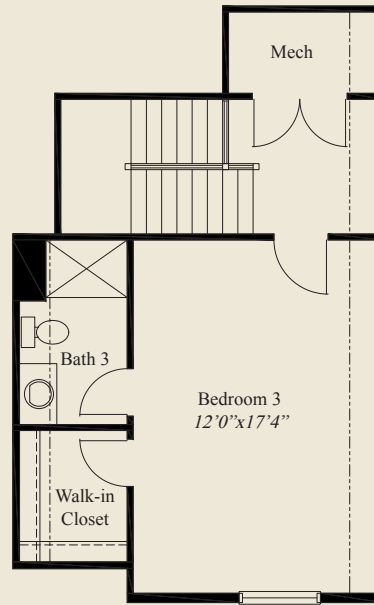
- 1,944 SqFt
- 3 Bedroom
- 3 Baths
- 2 Car Garage
- Easy Access Living - On Slab
- Large Front Porch
- 9' Ceilings on First Floor
- 11' Ceiling in Great Room
- Large Kitchen w/Walk-in Pantry
- Owners Suite w/Box Tray Ceiling
- Owners Bath w/Seated Shower
- First Floor Guest Room
- Rear Patio
- Private Mud Entry
- Second Floor Guest Suite w/Walk-in Closet

Home Information

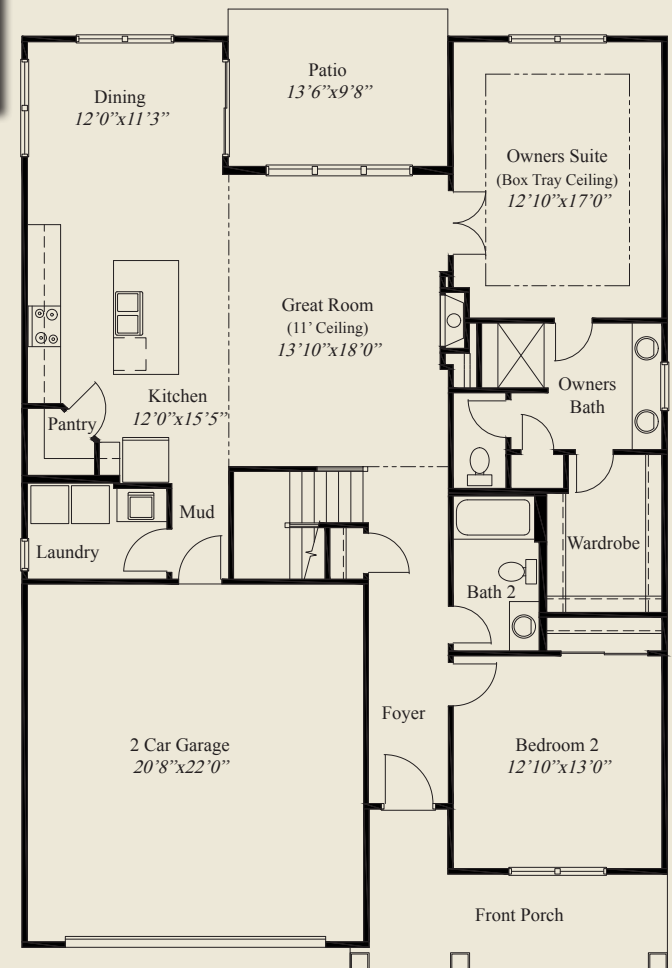
This custom patio home features easy access living, open living and entertainment space, an 11' ceiling great room w/adjacent patio, and 9' ceilings on the first floor. The spacious kitchen includes a walk-in pantry. The owners suite has a box tray ceiling, oversized shower w/ seat, and a large wardrobe. A first floor guest bedroom, private mud entry, and a second floor bedroom w/full bath & walk-in closet, complete this beautiful home.

© Romanelli & Hughes Building Co.

All home plans present on this brochure are protected by copyright. Reproduction either in whole or in part without written permission is strictly prohibited. All renderings and floor plans are artists' conceptions and are not intended to be an actual depiction of the home or its surroundings.



SECOND FLOOR 404 SQ.FT.



FIRST FLOOR 1,540 SQ.FT.

