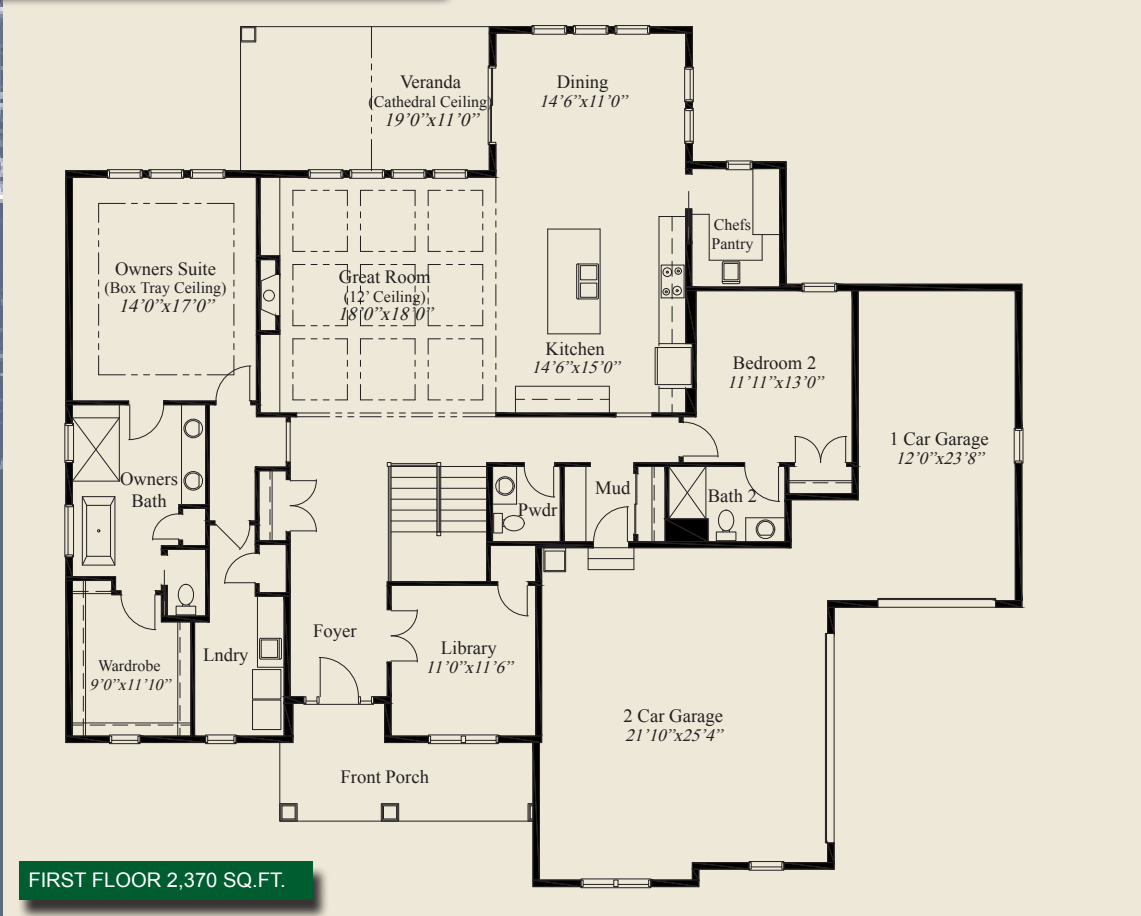
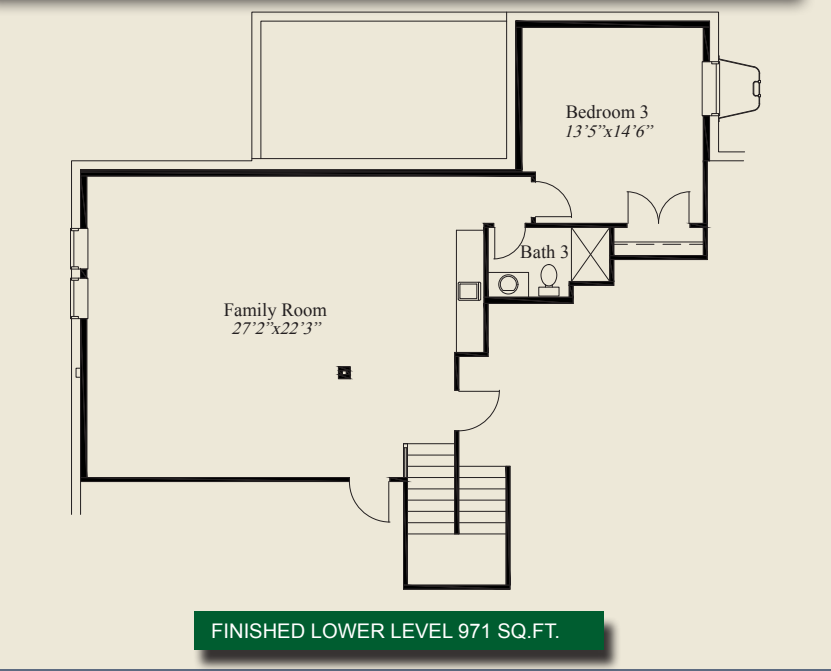




- Plan Information**
- 3,341 SqFt
 - 3 Bedrooms
 - 3 1/2 Baths
 - 3 Car Split Garage
 - Mud Room w/Bench & Closet
 - 10' Ceilings, 8' Doors on First Floor
 - 12' Box Beam Ceiling in Great Room
 - Library w/Glass French Doors
 - Kitchen w/Chefs Pantry
 - Guest Suite w/Private Bath
 - Owners Suite w/Tray Ceiling, Free Standing Tub
 - Huge Wardrobe w/Optional Laundry Access
 - Covered Veranda w/Cathedral Ceiling
 - Switchback Stairs to Lower Level
 - Finished LL w/Family Rm, Bar, Bedroom, Bath

This custom ranch features open entertaining and living with 10' ceilings and 8' doors on the first floor, a 12' box beam ceiling great room, and a covered veranda w/a cathedral ceiling. The library has glass french doors. The spacious owners suite features a box tray ceiling, oversized shower & free standing tub, along w/a huge wardrobe w/optional door to the laundry. The large kitchen w/ chefs pantry, a guest suite w/private bathroom, mud entry w/bench & closet, and switchback stairs to the finished lower level w/family room, bar, third bedroom and bath, complete this beautiful home.



© Romanelli & Hughes Building Co.
 All home plans present on this brochure are protected by copyright. Reproduction either in whole or in part without written permission is strictly prohibited. All renderings and floor plans are artists' conceptions and are not intended to be an actual depiction of the home or its surroundings.