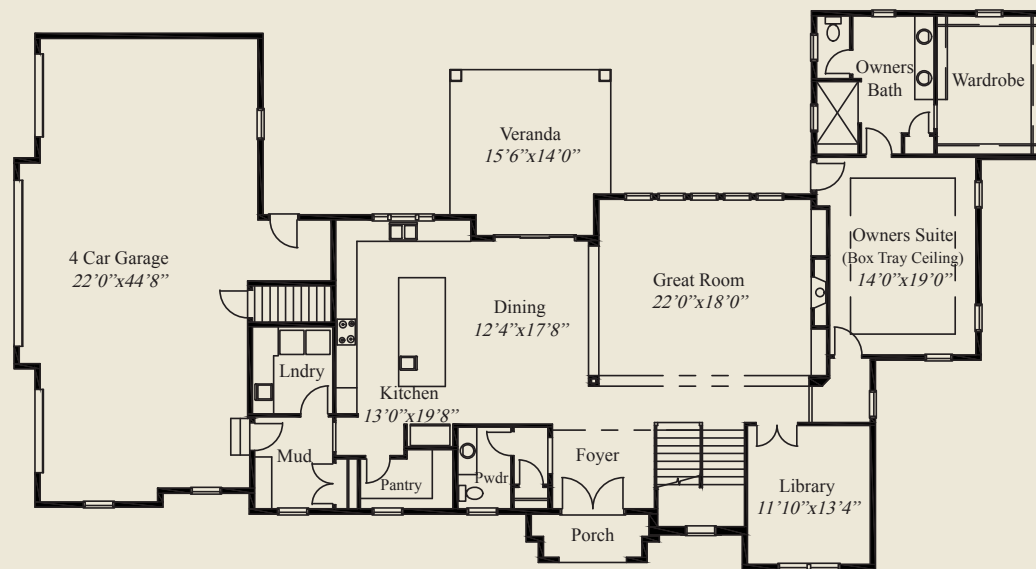
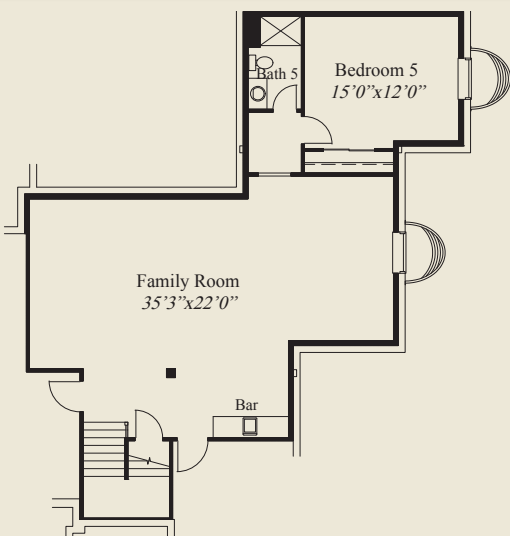




This custom design features 10' ceilings and 8' doors on the 1st floor and a spacious great room open to a large dining and kitchen w/walk-in pantry. The garage includes extra storage and stairs to the LL. A mud room w/bench & closet is adjacent to the laundry. The library has french doors. The 1st flr owners suite has a tray ceiling & huge shower & wardrobe. All 2nd flr bedrooms w/private baths & walk-in closets. A covered veranda & finished LL family rm, bar, and 5th bedroom & bath, complete this beautiful home.

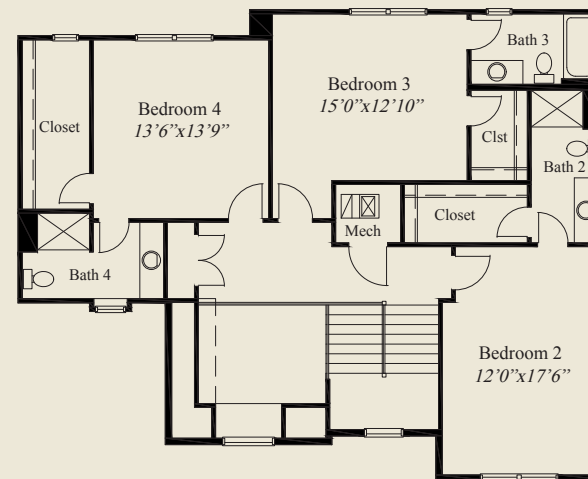


FIRST FLOOR 2,229 SQ.FT.



LOWER LEVEL 1,093 SQ.FT.

- Plan Information**
- 4,545 SqFt
 - 5 Bedrooms
 - 5 1/2 Baths
 - 4 Car Garage w/Storage & Stairs to LL
 - 10' Ceilings and 8' Doors on First Floor
 - Mudroom w/Bench & Closet, Adjacent Laundry
 - Huge Great Rm Open to Large Dining & Kitchen
 - Kitchen w/Oversized Island, Large Pantry
 - 1st Flr Owners Suite w/Tray Ceiling, Huge Shower - Huge Wardrobe
 - Library w/French Doors
 - Switchback Stairs w/Window
 - 2nd Flr Bedrooms w/Priv. Baths & Walk-in Closets
 - Finished LL Family Rm, Bar, Bedroom, Bath



SECOND FLOOR 1,223 SQ.FT.



© Romanelli & Hughes Building Co.
 All home plans present on this brochure are protected by copyright. Reproduction either in whole or in part without written permission is strictly prohibited. All renderings and floor plans are artists' conceptions and are not intended to be an actual depiction of the home or its surroundings.