

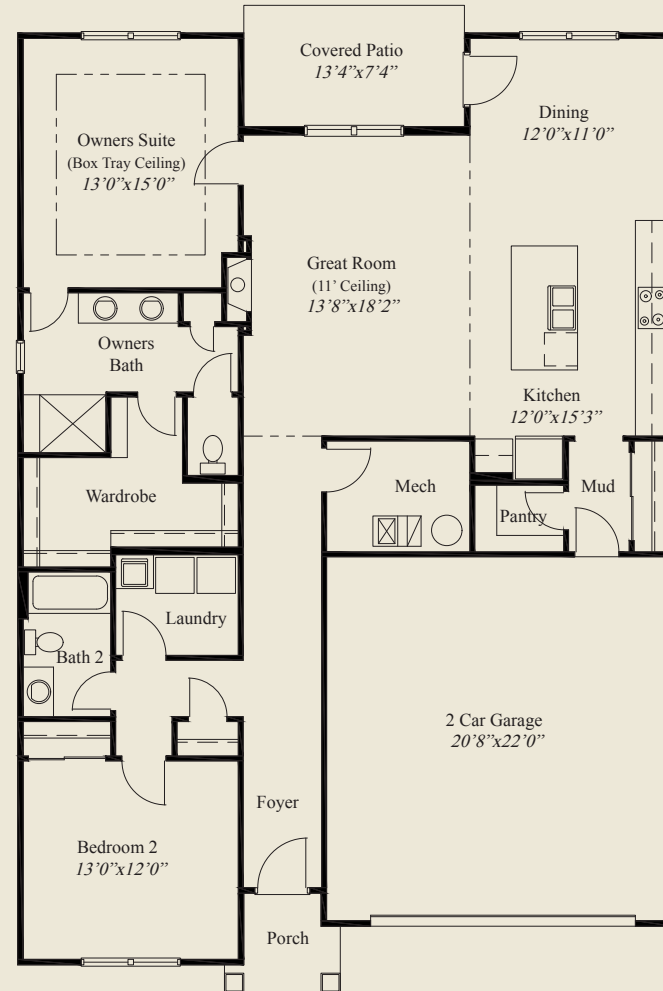


Home Information

This custom ranch features easy access living with open entertaining areas, 9' ceilings on the first floor and a 11' ceiling great room. A large kitchen includes a walk-in pantry, and the spacious owners suite has a box tray ceiling, a seated shower and a huge wardrobe. A first floor guest room, rear covered patio, and a private mud entry, complete this beautiful home.

Plan Information

- 1,619 SqFt
- 2 Bedrooms
- 2 Baths
- 2 Car Garage (Oversize)
- Easy Access Living - On Slab
- 9' Ceilings on First Floor
- 11' Ceiling Great Room
- Large Kitchen w/Walk-in Pantry
- Box Tray Ceiling in Owners Suite
- Owners Suite w/Huge Wardrobe
- Owners Bath w/Seated Shower
- First Floor Guest Room
- Rear Covered Patio
- Separate Laundry
- Private Mud Entry



FIRST FLOOR 1,619 SQ.FT.

© Romanelli & Hughes Building Co. All home plans present on this brochure are protected by copyright. Reproduction either in whole or in part without written permission is strictly prohibited. All renderings and floor plans are artists' conceptions and are not intended to be an actual depiction of the home or its surroundings.

