



Plan Information

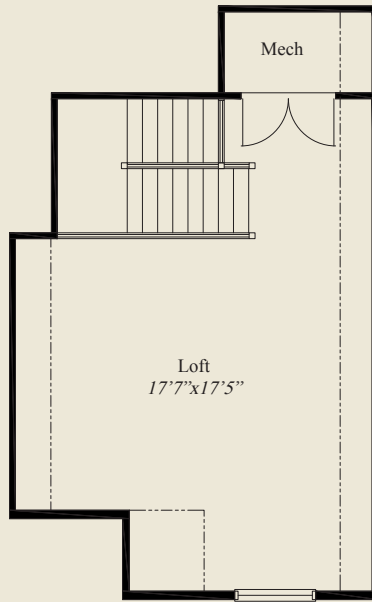
- 1,930 SqFt
- 2 Bedroom
- 2 Baths
- 2 Car Garage
- Easy Access Living - On Slab
- Large Front Porch
- 9' Ceilings on First Floor
- Great Room w/11' Ceiling
- Large Kitchen w/Walk-in Pantry
- Owners Suite w/Box Tray Ceiling
- Owners Bath w/Seated Shower
- First Floor Guest Room
- Rear Patio
- Mud Entry
- Large Second Floor Loft

Home Information

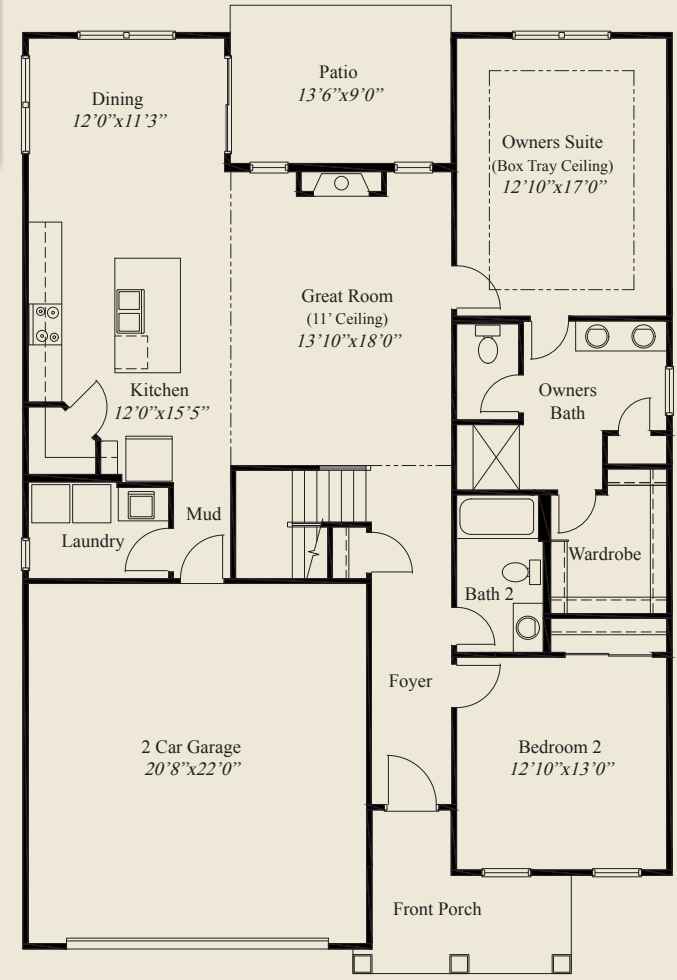
This custom patio home features easy access living, open living and entertainment space, a large front porch, an 11' ceiling great room w/ adjacent patio, and 9' ceilings on the first floor. The spacious kitchen includes a walk-in pantry. The owners suite has a box tray ceiling, oversized shower w/seat, and a large wardrobe. A 1st floor guest bedroom, a private mud entry, and a second floor with a huge loft, complete this beautiful home.

© Romanelli & Hughes Building Co.

All home plans present on this brochure are protected by copyright. Reproduction either in whole or in part without written permission is strictly prohibited. All renderings and floor plans are artists' conceptions and are not intended to be an actual depiction of the home or its surroundings.



SECOND FLOOR 390 SQ.FT.



FIRST FLOOR 1,540 SQ.FT.

