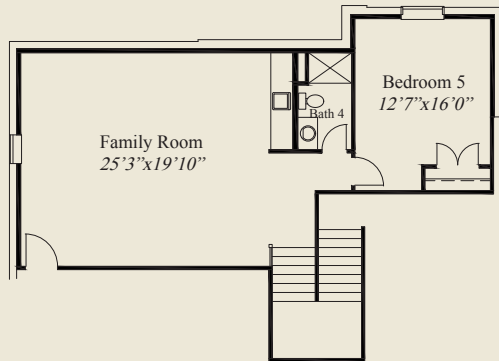




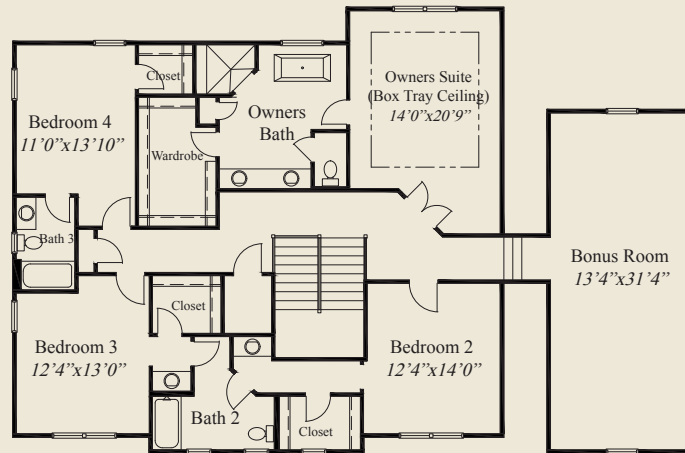
Plan Information

- 4,858 SqFt
- 5 Bedrooms
- 4 1/2 Baths
- 3 Car Garage (Oversize)
- Large Mud Room w/Bench & Walk-in Closet
- 11' Ceilings, 8' Doors on 1st Floor
- Spacious, Open Great Rm, Dining & Kitchen
- Large Walk-in Pantry
- Library w/Glass French Doors
- Covered Veranda
- Owners Suite w/Corner Shower, Free-standing Tub
- Huge Owners Wardrobe
- Spacious Upstairs Bedrooms w/Walk-in Closets
- Jack & Jill Bath Upstairs
- Huge Bonus Room Above Garage
- Finished LL Family Rm w/5th Bedroom, Bath

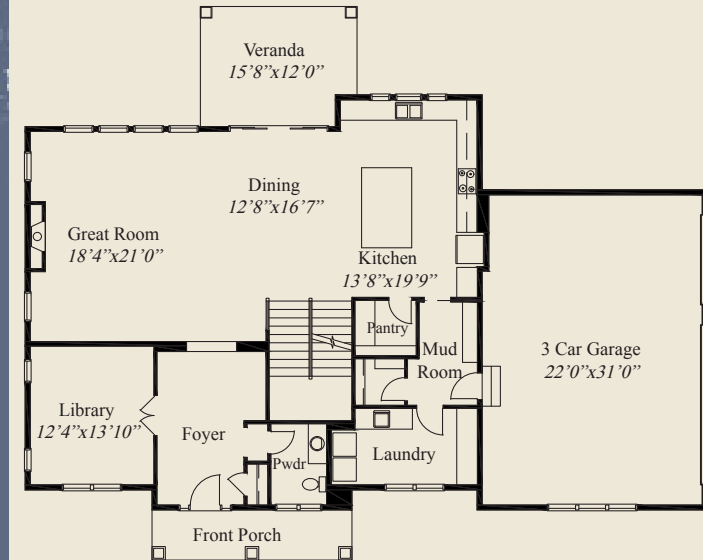
This custom home features 1st floor 11' ceilings & 8' doors with open great room, kitchen & dining areas. The foyer has glass french doors to the library. The kitchen includes a large walk-in pantry. A covered veranda and large mud room completes the 1st floor. The upstairs owners suite w/box tray ceiling has a corner shower, free standing tub, and huge wardrobe. 3 other bedrooms feature walk-in closets, a private bath and a jack & jill bath. A bonus room above the garage and a finished LL w/large family room, 5th bedroom & full bath, complete this beautiful home.



FINISHED LL 882 SQ.FT.



SECOND FLOOR 2,225 SQ.FT.



FIRST FLOOR 1,751 SQ.FT.



© Romanelli & Hughes Building Co.
 All home plans present on this brochure are protected by copyright. Reproduction either in whole or in part without written permission is strictly prohibited. All renderings and floor plans are artists' conceptions and are not intended to be an actual depiction of the home or its surroundings.