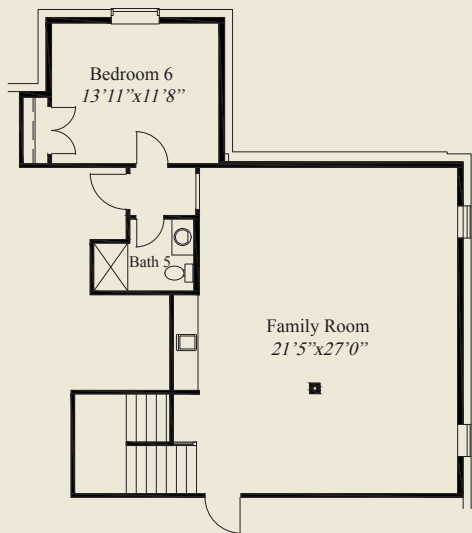




- ### Plan Information
- 4,889 SqFt
 - 6 Bedrooms
 - 5 1/2 Baths
 - 3 Car Garage (Oversize)
 - Mud Room w/Bench, Desk & Closet
 - 11' Ceilings, 8' Doors on 1st Floor
 - 9' Ceilings on 2nd Floor
 - Great Room, Kitchen, Dining w/Beamed Ceiling
 - Large Walk-in Pantry w/Grocery Door
 - First Floor Guest Bedroom w/Private Bath
 - Library w/Glass French Doors
 - Covered Veranda
 - Owners Suite w/Oversize Shower, Free-standing Tub
 - Huge Owners Wardrobe
 - Spacious Upstairs Bedrooms all w/Walk-in Closets
 - Jack & Jill Bath Upstairs
 - Finished LL Family Rm w/6th Bedroom, Bath

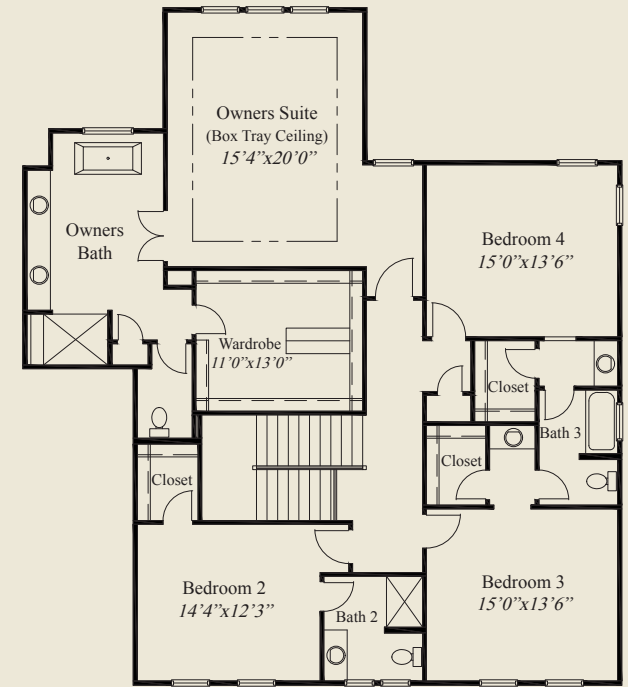
This custom home features 1st floor 11' ceilings & 8' doors. The foyer has glass french doors to the library. The kitchen includes a large walk-in pantry. A guest bedroom w/private bath, covered veranda, and mud room w/bench, closet & desk, complete the 1st floor. The upstairs owners suite w/box tray ceiling has an oversized shower, free standing tub, and huge wardrobe. 3 other bedrooms feature walk-in closets, a private bath and a jack & jill bath. A finished LL w/family room, 6th bedroom & full bath, complete this beautiful home.



FINISHED LL 977 SQ.FT.



FIRST FLOOR 1,971 SQ.FT.



SECOND FLOOR 1,941 SQ.FT.



© Romanelli & Hughes Building Co.
 All home plans present on this brochure are protected by copyright.
 Reproduction either in whole or in part without written permission
 is strictly prohibited. All renderings and floor plans are artists'
 conceptions and are not intended to be an actual depiction of the
 home or its surroundings.