

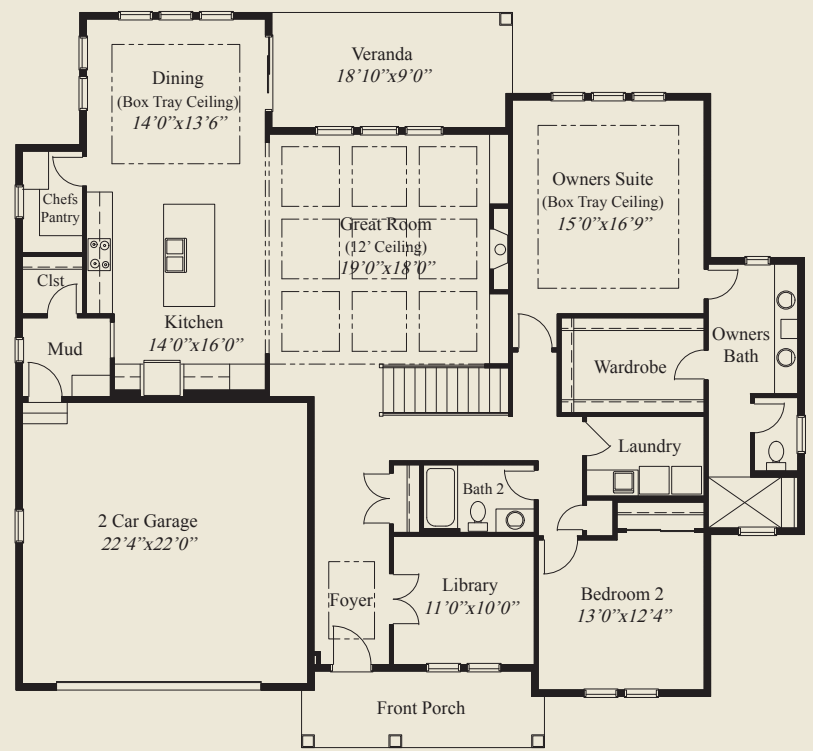
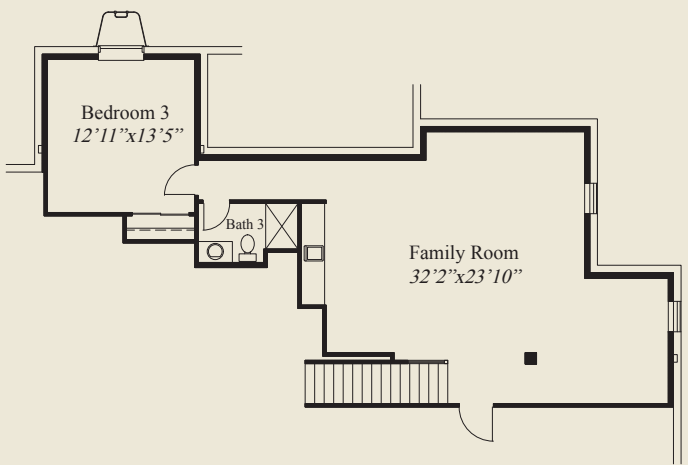


- ### Plan Information
- 3,119 SqFt
  - 3 Bedrooms
  - 3 Baths
  - 2 Car Garage
  - Large Front Porch
  - Mud Room w/ Storage Closet
  - Great Room w/12' Box Beam Ceiling
  - Chefs Pantry w/Appliance Counter
  - Covered Rear Veranda
  - Box Tray Ceilings in Dining, Foyer & Owners Suite
  - Owners Suite w/Oversize Shower, Large Wardrobe
  - Library w/Glass French Doors
  - First Floor Guest Bedroom
  - Finished LL w/Family Room, 3rd Bedroom, Bath

**Home Information**

This custom ranch features first floor 10' ceilings and 8' doors and a 12' box beam ceiling great room. The mud room has a walk-in closet for storage. The library features glass french doors and the kitchen includes a chefs pantry w/appliance counter. Tray ceilings adorn the foyer, dining & owners suite. The owners suite has an oversize shower, and large wardrobe. A first floor guest bedroom, a covered veranda, and a finished lower level family room with 3rd bedroom and full bath, complete this beautiful home.

© Romanelli & Hughes Building Co. All home plans present on this brochure are protected by copyright. Reproduction either in whole or in part without written permission is strictly prohibited. All renderings and floor plans are artists' conceptions and are not intended to be an actual depiction of the home or its surroundings.



FINISHED LL 931 SQ.FT.

FIRST FLOOR 2,188 SQ.FT.

