



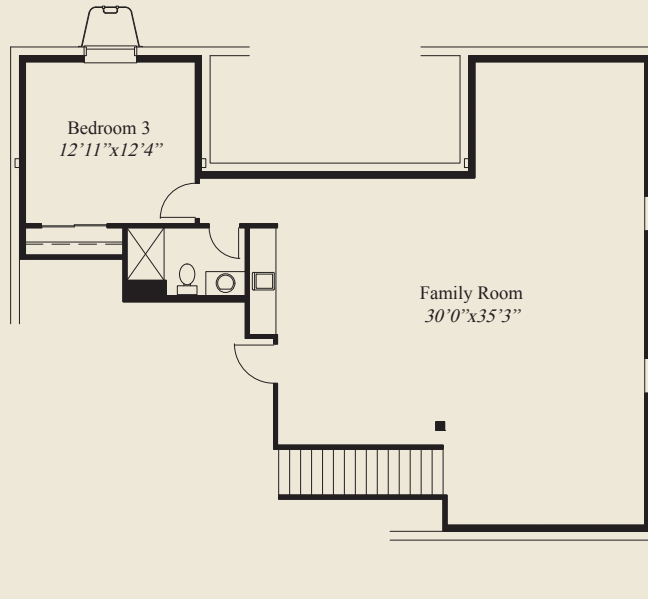
Plan Information

- 3,366 SqFt
- 3 Bedrooms
- 3 1/2 Baths
- 2 Car Garage (Oversize)
- 1st Floor 10' Ceilings, 8' Doors
- 12' Box Beam Ceiling in Great Room
- Chefs Pantry w/Appliance Counter
- Library w/Glass French Doors
- Garage Mud entry w/Optional Bench
- Owners Suite w/Oversize Shower & Wardrobe
- Wardrobe w/Optional Laundry Door
- 1st Floor Guest Suite w/Private Bath
- Covered Rear Veranda
- Finished LL w/Family Rm, Bedroom, Bath

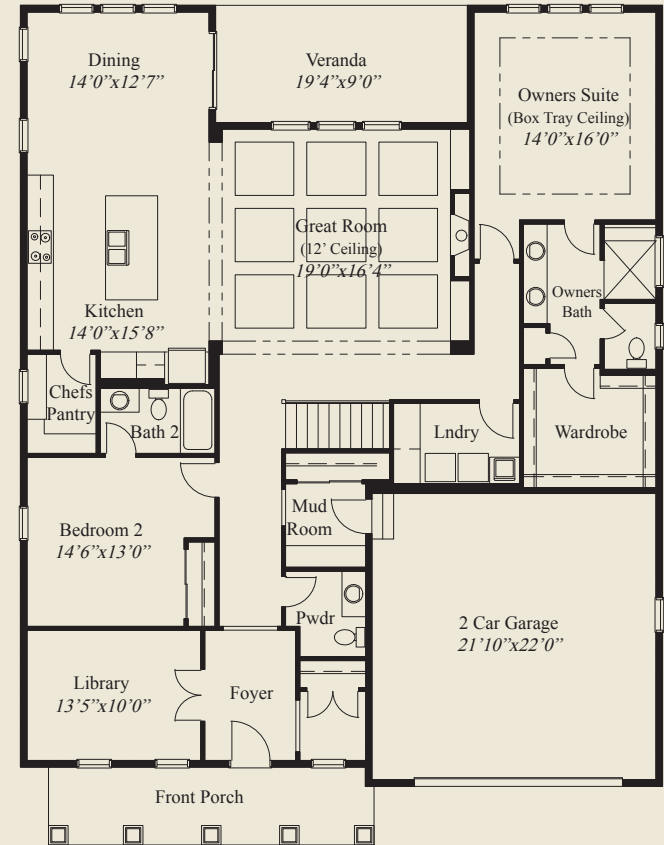


Home Information

This custom patio home features a 12' box beam ceiling in the great room, first floor 10' ceilings and 8' doors, and a spacious kitchen w/ chefs pantry. The mud entry offers optional bench space. The owners suite features a box tray ceiling, oversized shower, and a large wardrobe with optional laundry door. A library w/glass french doors, a covered rear veranda, a 1st floor guest suite with private bath, and a finished LL w/family room, bedroom and bath, complete this beautiful home.



LOWER LEVEL 1,123 SQ.FT.



FIRST FLOOR 2,243 SQ.FT.

© Romanelli & Hughes Building Co.
 All home plans present on this brochure are protected by copyright. Reproduction either in whole or in part without written permission is strictly prohibited. All renderings and floor plans are artists' conceptions and are not intended to be an actual depiction of the home or its surroundings.

