



Plan Information

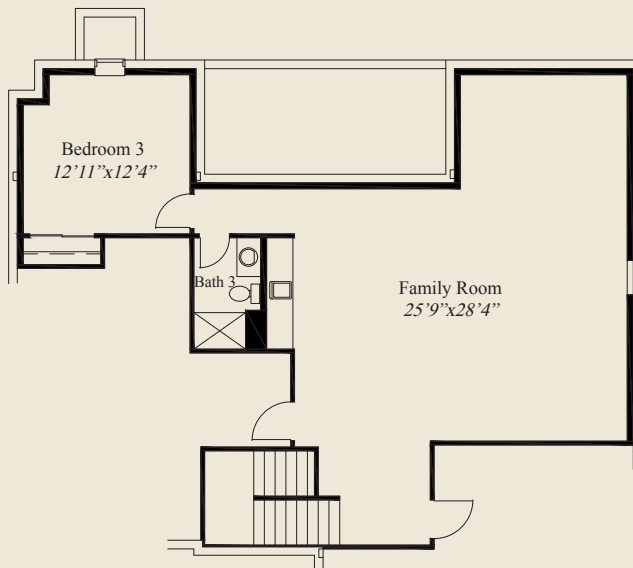
- 3,232 SqFt
- 3 Bedrooms
- 3 1/2 Baths
- 3 Car Garage (Oversize)
- Mud Room w/Optional Bench
- Great Room w/Box Beam 12' Ceiling
- Chefs Pantry w/Optional Grocery Door From Garage
- Laundry Adjacent to Wardrobe w/Optional Door
- Covered Rear Veranda
- Box Tray Ceilings in Dining & Owners Suite
- Owners Suite w/Oversize Shower, Large Wardrobe
- Library w/Double Glass Doors
- Guest Suite w/Private Bath
- Finished LL w/Family Room, 3rd Bedroom, Bath



Home Information

This custom ranch features first floor 10' ceilings and 8' doors and a 12' box beam ceiling great room. The mud room has optional bench space. The library features glass french doors and the kitchen includes a chefs pantry w/optional grocery door from garage. The owners suite has a box tray ceiling, oversize shower, and large wardrobe w/optional laundry access. A first floor guest suite w/private bath, a covered veranda, and a finished lower level family room with 3rd bedroom and full bath, complete this beautiful home.

© Romanelli & Hughes Building Co. All home plans present on this brochure are protected by copyright. Reproduction either in whole or in part without written permission is strictly prohibited. All renderings and floor plans are artists' conceptions and are not intended to be an actual depiction of the home or its surroundings.



FINISHED LL 1,021 SQ.FT.



FIRST FLOOR 2,211 SQ.FT.

