



**Plan Information**

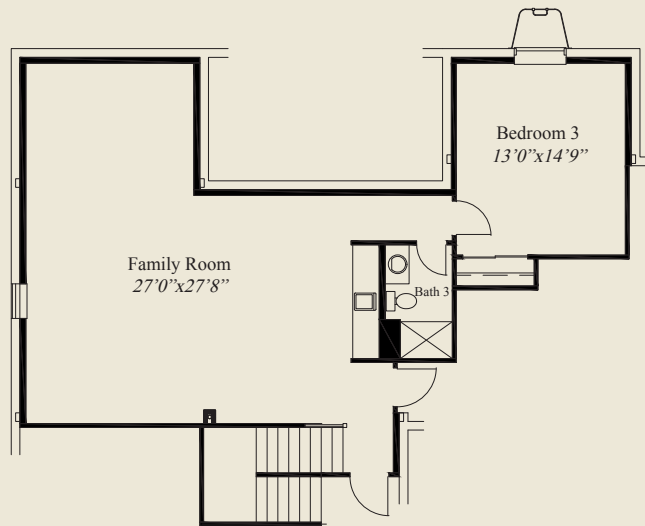
- 3,291 SqFt
- 3 Bedrooms
- 3 1/2 Baths
- 3 Car Garage (Oversize)
- Mud Room w/Bench & Closet
- Great Room w/Box Beam 12' Ceiling
- Kitchen w/Chefs Pantry & Appliance Counter
- Covered Rear Veranda
- Owners Suite w/Tray Ceiling, Shower, Large Wardrobe
- Laundry w/Optional Wardrobe Access
- First Floor Guest Bedroom
- Library w/Glass French Doors
- Finished LL w/Family Room, 3rd Bedroom, Full Bath



**Home Information**

This patio home features first floor 10' ceilings and 8' doors and a 12' box beam ceiling great room. The library features glass french doors and the spacious kitchen includes a chefs pantry w/appliance counter. The owners suite has a box tray ceiling, oversize shower, and a large wardrobe with optional access door to the adjacent laundry. A first floor guest bedroom, covered rear veranda, mud room w/bench & closet, and a finished LL w/family room, 3rd bedroom & full bath, complete this beautiful home.

© Romanelli & Hughes Building Co. All home plans present on this brochure are protected by copyright. Reproduction either in whole or in part without written permission is strictly prohibited. All renderings and floor plans are artists' conceptions and are not intended to be an actual depiction of the home or its surroundings.



LOWER LEVEL 1,049 SQ.FT.



FIRST FLOOR 2,242 SQ.FT.

