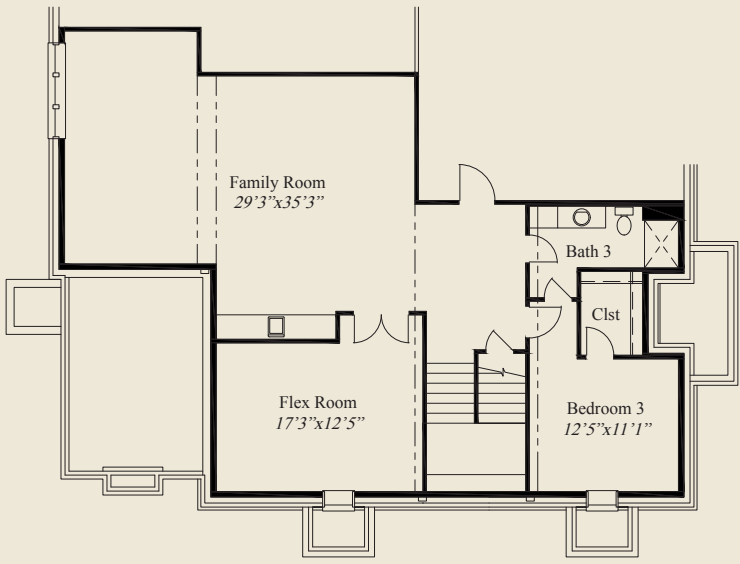


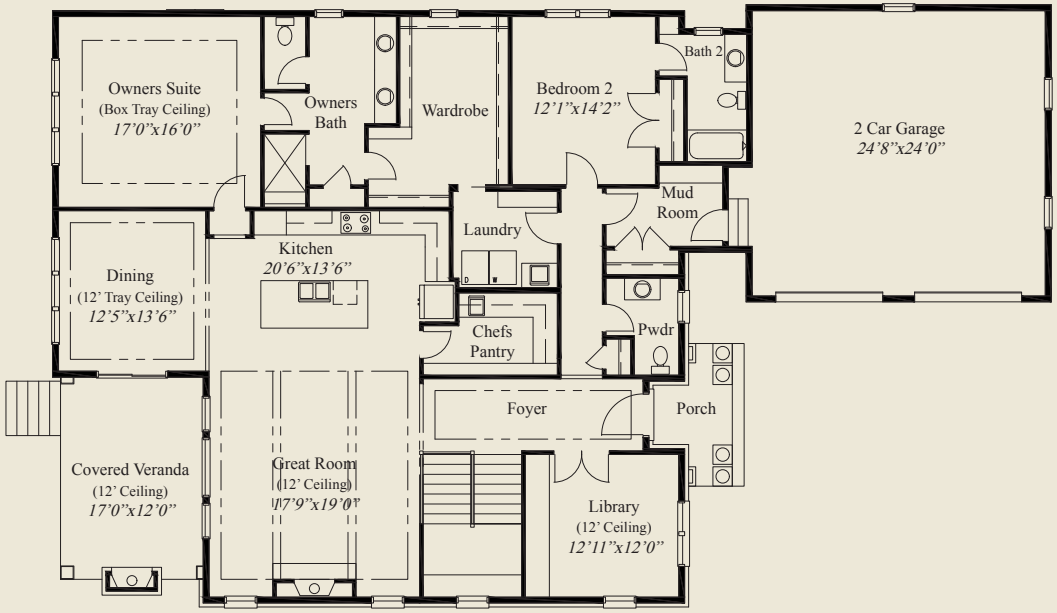


- ### Plan Information
- 3,788 SqFt
 - 3 Bedrooms
 - 3 1/2 Baths
 - 2 Car Garage (Oversize)
 - Mud Room w/Bench & Closet
 - 12' Ceiling Foyer & Dining
 - 10' Ceilings, 8' Doors on First Floor
 - 12' Box Beam Ceiling Great Room
 - Library w/12' Ceiling & Glass French Doors
 - Large Kitchen w/Spacious Chefs Pantry
 - Box Tray Ceilings in Foyer, Dining & Owners Suite
 - Guest Suite w/Private Bath
 - Owners Suite Wardrobe w/Laundry Door
 - Covered Veranda w/12' Ceiling
 - Switchback Stairs w/Window
 - Finished LL w/Family Rm, Flex, Bedroom, Bath

This custom ranch features 12' ceilings in the foyer, great room, library, dining and covered veranda. A beamed ceiling is in the great room and tray ceilings adorn the foyer, dining and owners suite. 10' ceilings and 8' doors are throughout the rest of the first floor. The library has glass french doors. The spacious owners suite features a huge wardrobe w/laundry access, and deluxe bath w/oversize shower. The kitchen w/chefs pantry, a guest suite w/private bath, a mud room w/bench & closet, and the finished lower level w/huge family room, flex room, and third bedroom and bath, complete this beautiful home.



FINISHED LOWER LEVEL 1,304 SQ.FT.



FIRST FLOOR 2,484 SQ.FT.



© Romanelli & Hughes Building Co.
 All home plans present on this brochure are protected by copyright. Reproduction either in whole or in part without written permission is strictly prohibited. All renderings and floor plans are artists' conceptions and are not intended to be an actual depiction of the home or its surroundings.