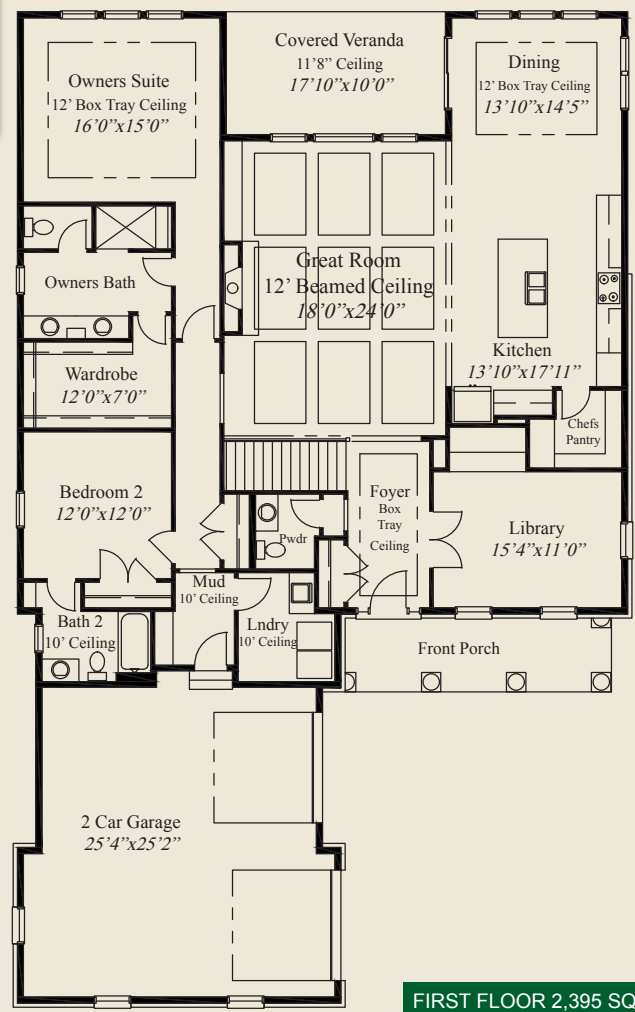


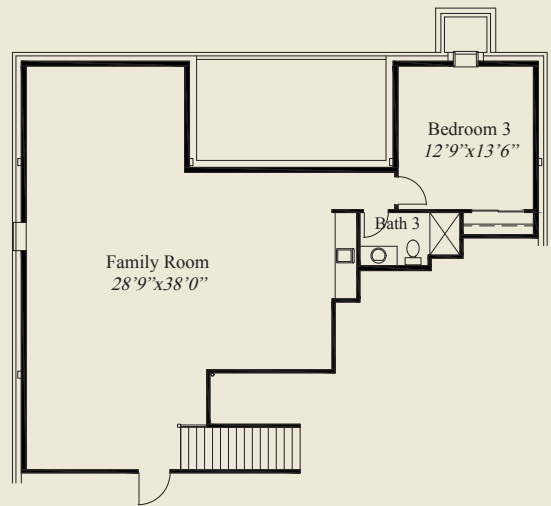


- ### Plan Information
- 3,590 SqFt
 - 3 Bedrooms
 - 3 1/2 Baths
 - 2 Car Garage (Oversize)
 - Mud Entry from Garage w/10' Ceiling
 - 11' Ceilings, 8' Doors on First Floor
 - 12' Great Room w/Beamed Ceiling
 - Library w/Double French Doors
 - Large Kitchen w/Chefs Pantry
 - Box Tray Ceilings in Owners Suite & Dining
 - Guest Suite w/Private Bath w/10' Ceiling
 - Owners Suite w/Oversize Shower & Wardrobe
 - Large Laundry w/10' Ceiling
 - Covered Veranda
 - Finished LL w/Family Rm, 3rd Bedroom, Bath

This custom home features a large front porch and open entertaining and living with spacious rooms and tall ceilings in several rooms. Throughout the first floor are 11' ceilings and 8' doors. A 10' ceiling is in the mud entry and the adjacent laundry, and the great room features a 12' beamed ceiling. The formal foyer, w/box tray ceiling, has double french doors to the library. A 12' box tray ceiling adorns the spacious owners suite and the guest suite has a private bath and 10' ceiling. The large kitchen with a chefs pantry and the finished lower level with family room, third bedroom and bath, complete this beautiful home.



FIRST FLOOR 2,395 SQ.FT.



FINISHED LOWER LEVEL 1,195 SQ.FT.



© Romanelli & Hughes Building Co.
 All home plans present on this brochure are protected by copyright. Reproduction either in whole or in part without written permission is strictly prohibited. All renderings and floor plans are artists' conceptions and are not intended to be an actual depiction of the home or its surroundings.