



Plan Information

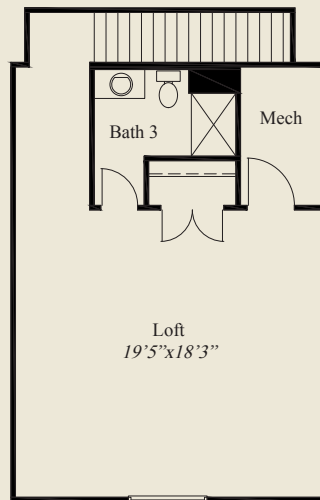
- 2,605 SqFt
- 2 Bedrooms
- 3 Baths
- 3 Car Garage
- Low Step Entry Easy Access Living
- 12' Ceiling Great Room
- 10' Ceilings, 8' Doors on 1st Floor
- Kitchen w/ Chefs Pantry, Pocket Office
- Large Rear Covered Veranda
- Owners Suite w/Tray Ceiling & Huge Shower
- Spacious Wardrobe
- Private Mud Entry
- Large Second Floor Loft/Bedroom, Bath

Home Information

This custom patio home features low step entry easy access with open living and a 12' ceiling great room. 10' ceilings and 8' doors are throughout the first floor. The kitchen has a chefs pantry and pocket office. The owners suite features a box tray ceiling, oversized shower and a spacious wardrobe. A first floor guest suite, private mud entry, rear covered veranda, and a second floor loft w/full bath, all add to the appeal of this beautiful home.

© Romanelli & Hughes Building Co.

All home plans present on this brochure are protected by copyright. Reproduction either in whole or in part without written permission is strictly prohibited. All renderings and floor plans are artists' conceptions and are not intended to be an actual depiction of the home or its surroundings.



SECOND FLOOR 619 SQ.FT.



FIRST FLOOR 1,986 SQ.FT.

