



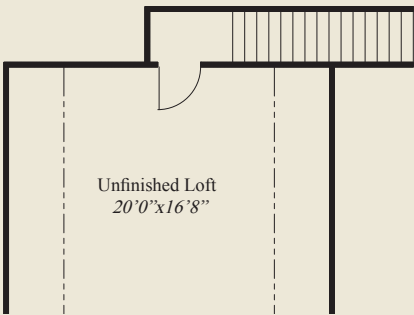
Craftsman



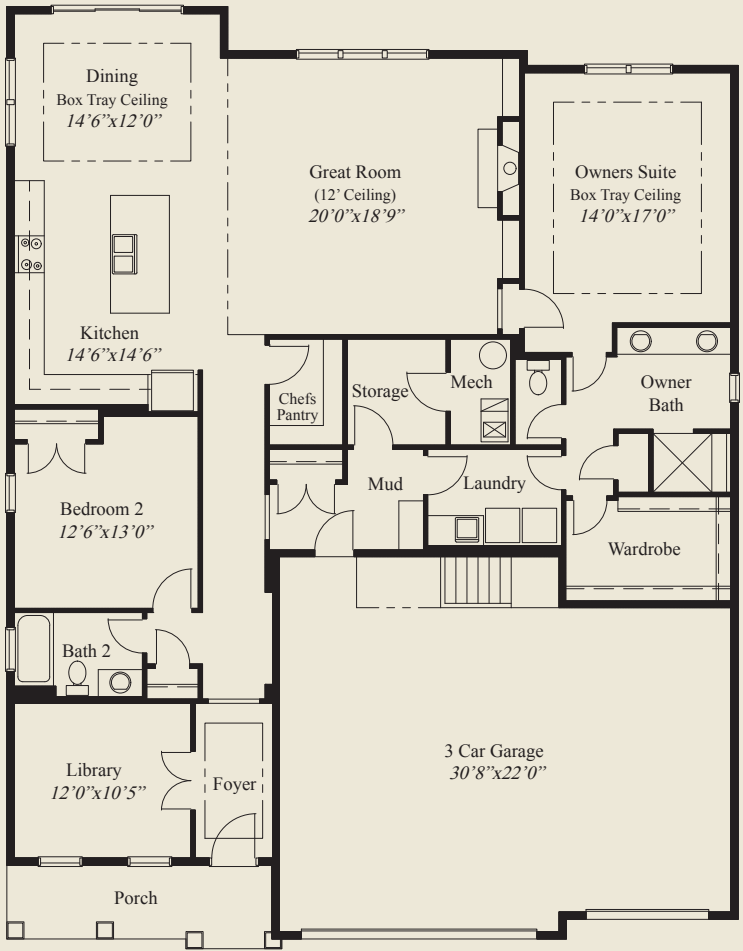
Farmhouse

Plan Information

- 1,890 SqFt
- 2 Bedrooms
- 2 Baths
- 3 Car Garage w/Extra Storage
- Private Mud Entry, Storage Closet
- Low Step Entry Easy Access Living
- 10' Ceilings, 8' Doors on First Floor
- Box Tray Ceilings in Dining & Foyer
- Owners Suite w/Box Tray Ceiling
- Owners Bath w/Huge Shower
- Laundry Access Door to Owners Suite
- 12' Ceiling Great Room
- Kitchen w/Chefs Pantry
- First Floor Guest Bedroom
- Library w/French Doors
- Unfinished Second Floor Storage Loft



Unfinished Loft  
20'0"x16'8"



3 Car Garage  
30'8"x22'0"

SECOND FLOOR (Unfinished)

FIRST FLOOR 1,890 SQ.FT.

© Romanelli & Hughes Building Co.  
All home plans present on this brochure are protected by copyright.  
Reproduction either in whole or in part without written permission  
is strictly prohibited. All renderings and floor plans are artists'  
conceptions and are not intended to be an actual depiction of the  
home or its surroundings.

