



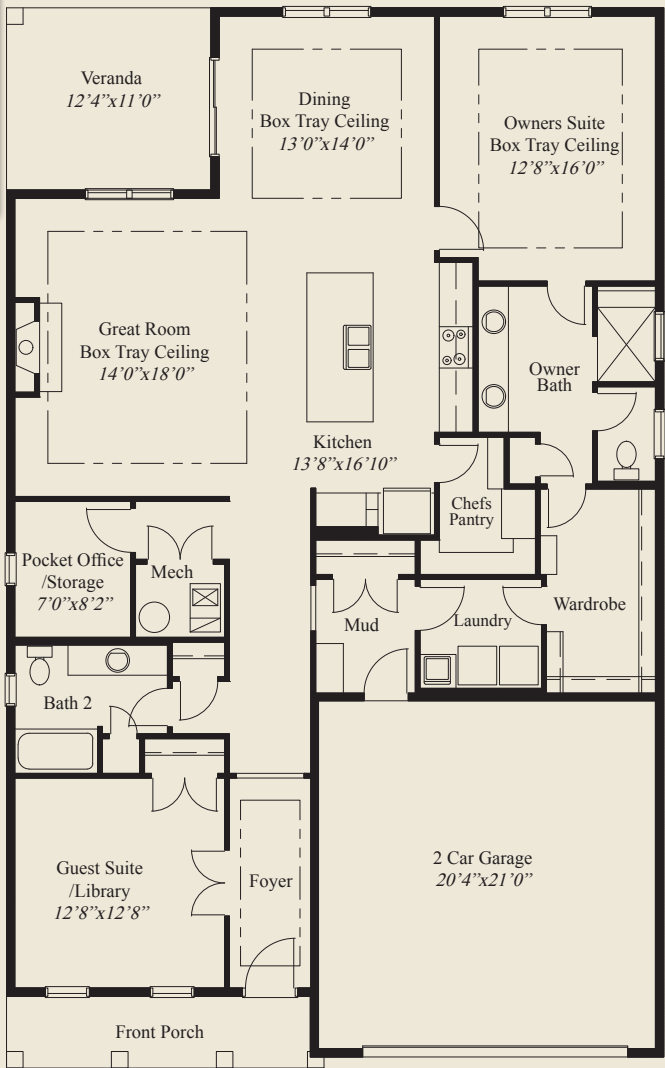
Farm House



Craftsman

Plan Information

- 1,860 SqFt
- 2 Bedrooms
- 2 Baths
- 2 Car Garage
- On Slab for Easy Access Living
- 10' Ceilings, 8' Doors First Floor
- Box Tray Ceilings in Great Rm, Dining, Foyer
- Owners Suite w/Box Tray Ceiling, Huge Closet
- Wardrobe w/Door to Laundry
- Kitchen w/Chefs Pantry
- Pocket Office/Storage
- Guest Suite/Library w/Double Doors
- Covered Rear Veranda
- Private Mud Entry



FIRST FLOOR 1,860 SQ.FT.



© Romanelli & Hughes Building Co.
All home plans present on this brochure are protected by copyright.
Reproduction either in whole or in part without written permission
is strictly prohibited. All renderings and floor plans are artists'
conceptions and are not intended to be an actual depiction of the
home or its surroundings.