

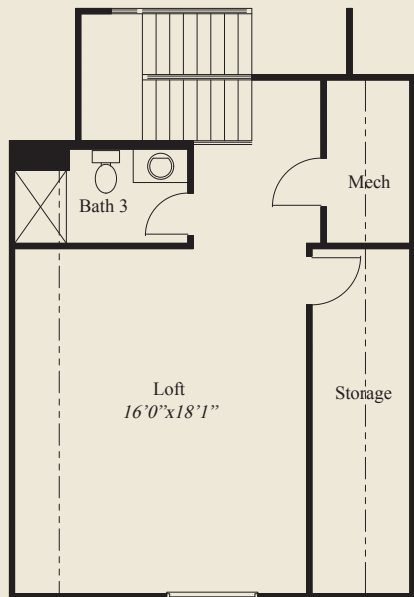


**Plan Information**

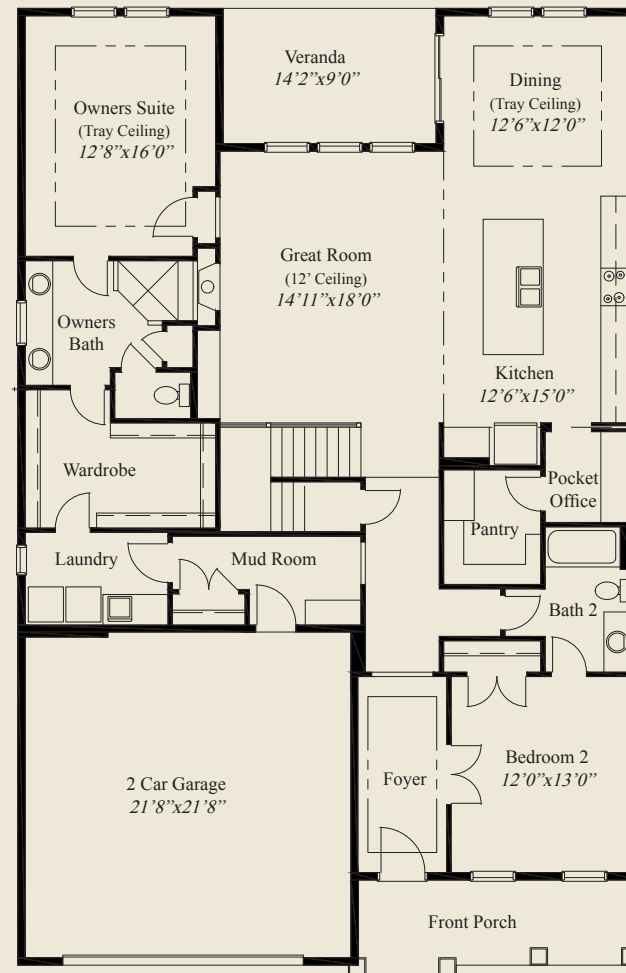
- 2,569 SqFt
- 2 Bedrooms
- 3 Baths
- 3 Car Garage
- Low Step Entry Easy Access Living
- Mud Room w/Bench, Closet, Laundry Access
- Foyer, Dining, Owners Suite w/Tray Ceilings
- 12' Ceiling Great Room
- 10' Ceilings, 8' Doors on 1st Floor
- Kitchen w/Walk-in Pantry & Pocket Office
- Rear Covered Veranda
- Owners Suite w/Huge Bath, Oversize Shower
- Spacious Wardrobe w/Door to Laundry
- Guest Bedroom w/Opt. Glass French Doors
- 2nd Floor w/Loft, Bedroom, Full Bath, Storage

**Home Information**

This custom patio home features low step entry, easy access living and a 12' ceiling great room. 10' ceilings and 8' doors are throughout the first floor. The large kitchen has a walk-in pantry and pocket office. The spacious dining area includes a box tray ceiling. The owners suite includes a box tray ceiling, oversized shower and a large wardrobe w/ laundry access door. A first floor guest bedroom w/opt. glass french doors, a private mud entry w/ bench, closet & laundry access, a rear covered veranda, and a second floor w/large loft, bedroom, full bath & extra storage, complete this beautiful home.



SECOND FLOOR 663 SQ.FT.



FIRST FLOOR 1,906 SQ.FT.

© Romanelli & Hughes Building Co.  
 All home plans present on this brochure are protected by copyright. Reproduction either in whole or in part without written permission is strictly prohibited. All renderings and floor plans are artists' conceptions and are not intended to be an actual depiction of the home or its surroundings.

