



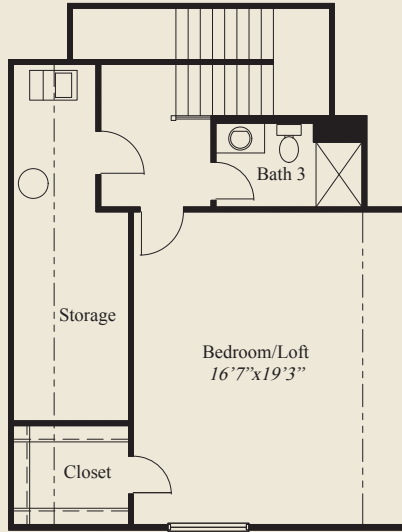
- Plan Information**
- 2,730 SqFt
  - 2 Bedrooms
  - 3 Baths
  - 2 Car Garage
  - Low Step Entry Easy Access Living
  - Formal Foyer w/Tray Ceiling
  - 12' Ceiling Great Room
  - 10' Ceilings, 8' Doors on 1st Floor
  - Kitchen w/Walk-in Pantry
  - Rear Covered Veranda
  - Owners Suite w/Box Tray Ceiling
  - Owners Bath w/Oversized Shower
  - Huge Wardrobe w/Laundry Access
  - Large Private Mud Entry
  - Second Floor Loft/Bedroom w/Full Bath
  - Huge Second Floor Storage Room



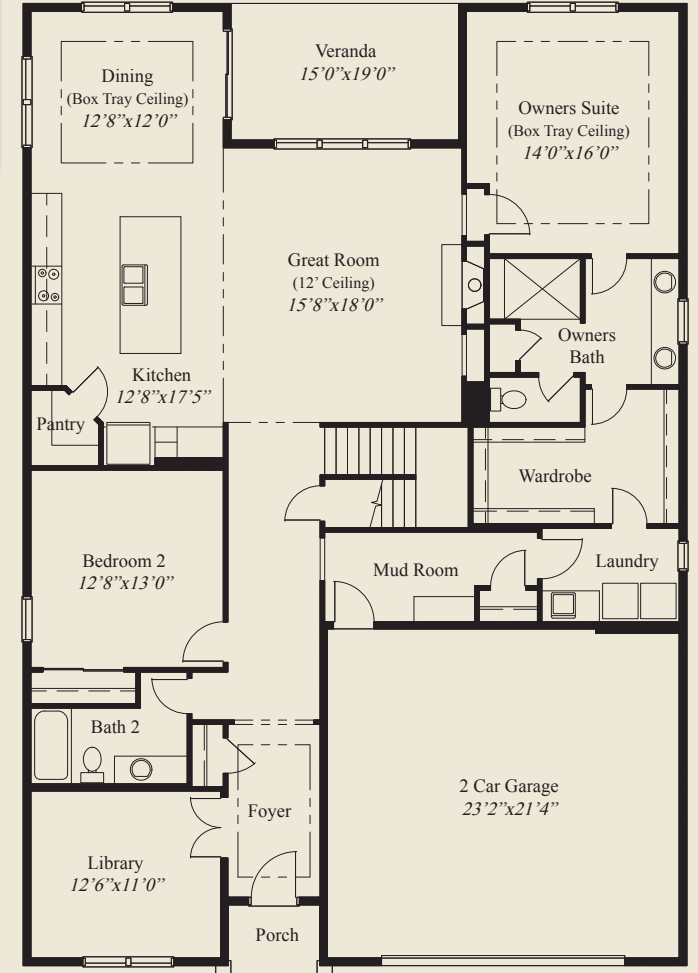
**Home Information**

This custom patio home features low step entry easy access with open living and a 12' ceiling great room. 10' ceilings and 8' doors are throughout the first floor. The kitchen has a walk-in pantry and the spacious dining area features a box tray ceiling. The owners suite includes a box tray ceiling, oversized shower and a huge wardrobe w/ laundry access door. A private mud entry, rear covered veranda, and a second floor loft/bedroom w/full bath, complete this beautiful home.

© Romanelli & Hughes Building Co. All home plans present on this brochure are protected by copyright. Reproduction either in whole or in part without written permission is strictly prohibited. All renderings and floor plans are artists' conceptions and are not intended to be an actual depiction of the home or its surroundings.



SECOND FLOOR 648 SQ.FT.



FIRST FLOOR 2,082 SQ.FT.

