



Plan Information

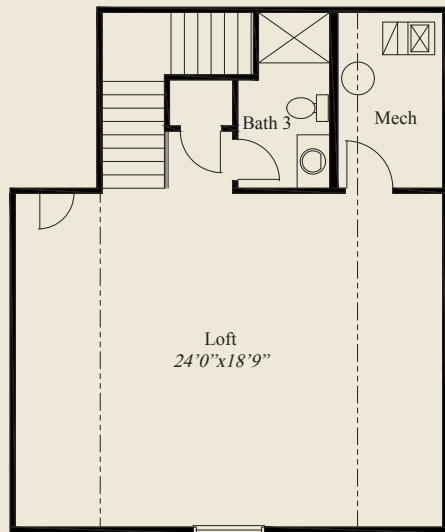
- 2,648 SqFt
- 2 Bedrooms
- 3 1/2 Baths
- 2 Car Garage
- Low Step Entry Easy Access Living
- 12' Beamed Ceiling Great Room
- 10' Ceilings, 8' Doors on 1st Floor
- Kitchen w/Walk-in Pantry
- Rear Covered Veranda w/12' Ceiling
- Owners Suite w/Tray Ceiling & Huge Shower
- Guest Suite w/Private Bath
- Huge Wardrobe w/Laundry Access
- Large Mud Entry
- Large Second Floor Loft w/Full Bath

Home Information

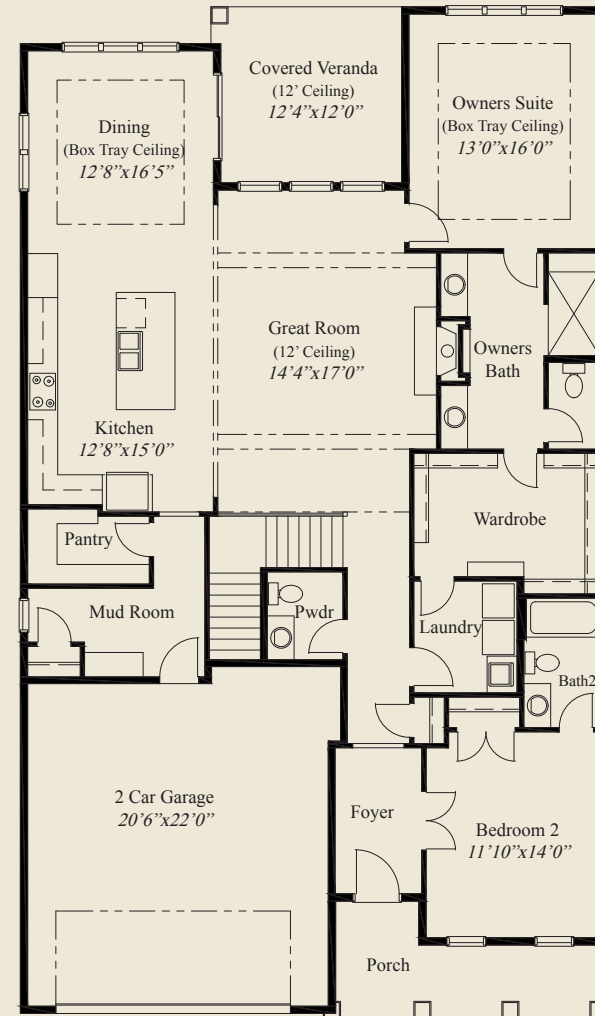
This custom patio home features easy access low step entry with a 12' beamed ceiling great room. 10' ceilings and 8' doors are throughout the first floor. The kitchen has a walk-in pantry and the spacious dining area features a box tray ceiling. The owners suite includes a box tray ceiling, oversized shower and a huge wardrobe w/laundry access door. A guest suite includes a private bath. A mud entry, rear covered veranda w/12' ceiling, and a second floor loft w/full bath, complete this beautiful home.

© Romanelli & Hughes Building Co.

All home plans present on this brochure are protected by copyright. Reproduction either in whole or in part without written permission is strictly prohibited. All renderings and floor plans are artists' conceptions and are not intended to be an actual depiction of the home or its surroundings.



SECOND FLOOR 677 SQ.FT.



FIRST FLOOR 1,971 SQ.FT.

