

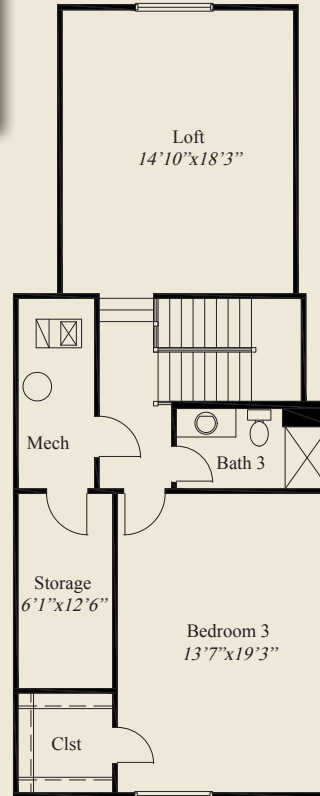


Plan Information

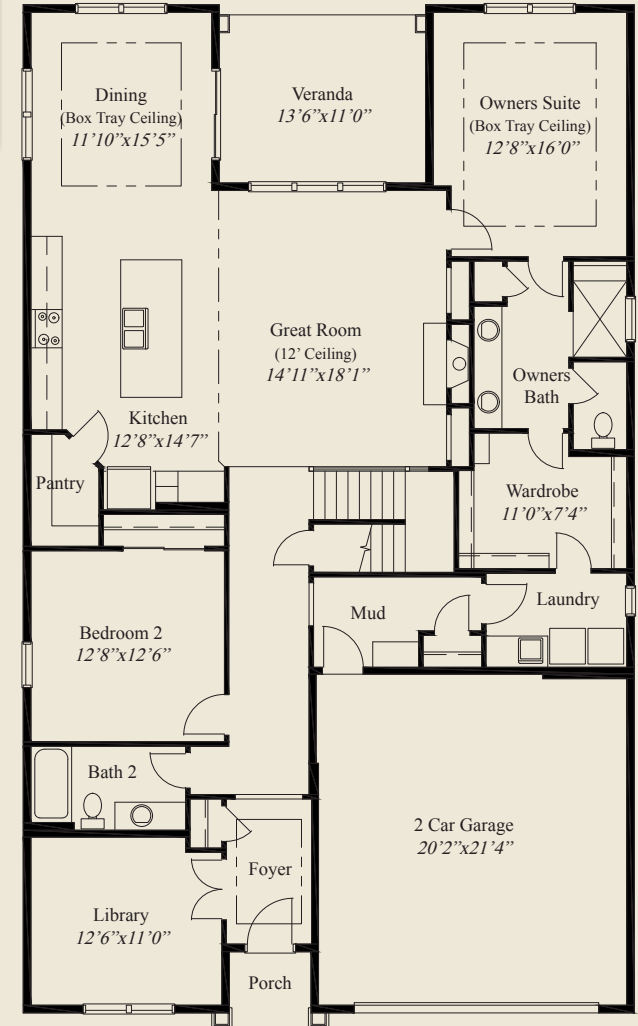
- 2,944 SqFt
- 3 Bedrooms
- 3 Baths
- 2 Car Garage w/Private Mud Entry
- Low Step Entry Easy Access Living
- Foyer, Dining, Owners Suite w/Box Tray Ceilings
- 12' Ceiling Great Room
- 10' Ceilings, 8' Doors on 1st Floor
- Kitchen w/Walk-in Pantry
- Rear Covered Veranda
- Owners Suite w/Tray Ceiling, Oversize Shower
- Huge Wardrobe w/Optional Door to Laundry
- Library w/ French Doors
- Second Floor Loft w/Storage, 3rd Bedroom, Bath

Home Information

This custom patio home features low step entry, easy access living and a 12' ceiling great room. 10' ceilings and 8' doors are throughout the first floor. The kitchen has a walk-in pantry and the spacious dining area features a box tray ceiling. The owners suite includes a box tray ceiling, oversized shower and a spacious wardrobe w/ optional laundry access door. A library w/french doors, first floor guest bedroom, a private mud entry, rear covered veranda, and a second floor open loft w/bedroom, full bath, and storage room, complete this beautiful home.



SECOND FLOOR 942 SQ.FT.



FIRST FLOOR 2,002 SQ.FT.

© Romanelli & Hughes Building Co.
 All home plans present on this brochure are protected by copyright. Reproduction either in whole or in part without written permission is strictly prohibited. All renderings and floor plans are artists' conceptions and are not intended to be an actual depiction of the home or its surroundings.

