

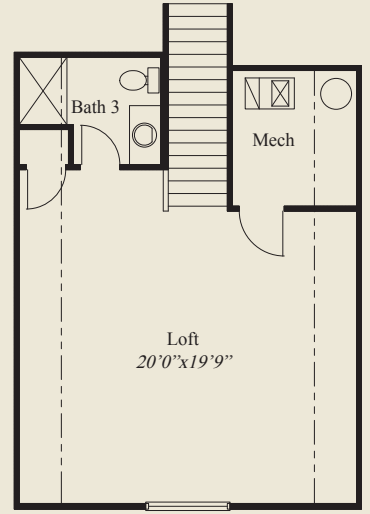


Craftsman

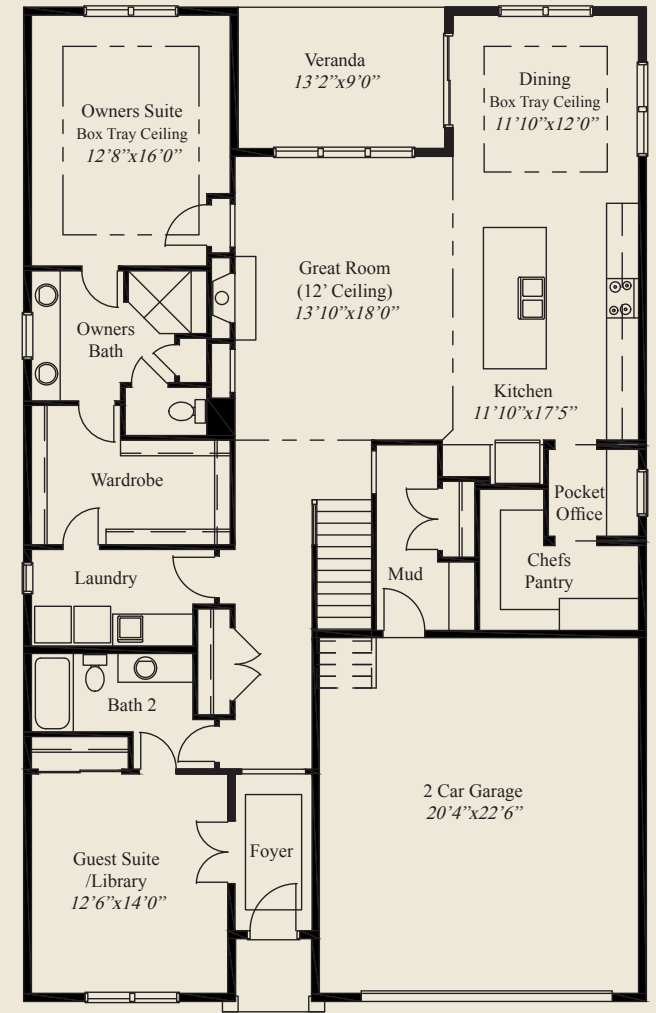
- Plan Information**
- 2,420 SqFt
 - 2 Bedrooms
 - 3 Baths
 - 2 Car Garage
 - Private Mud Entry
 - Low Step Entry Easy Access Living
 - 10' Ceilings, 8' Doors on First Floor
 - Box Tray Ceilings in Dining & Foyer
 - Owners Suite w/Box Tray Ceiling
 - Owners Bath w/Huge Shower
 - Wardrobe w/Laundry Access Door
 - 12' Ceiling Great Room
 - Kitchen w/Chefs Pantry & Pocket Office
 - Guest Suite/Library w/Double Doors
 - Covered Veranda
 - Second Floor Loft w/Full Bath



Farmhouse



SECOND FLOOR 530 SQ.FT.



FIRST FLOOR 1,890 SQ.FT.

© Romanelli & Hughes Building Co.
 All home plans present on this brochure are protected by copyright. Reproduction either in whole or in part without written permission is strictly prohibited. All renderings and floor plans are artists' conceptions and are not intended to be an actual depiction of the home or its surroundings.

