

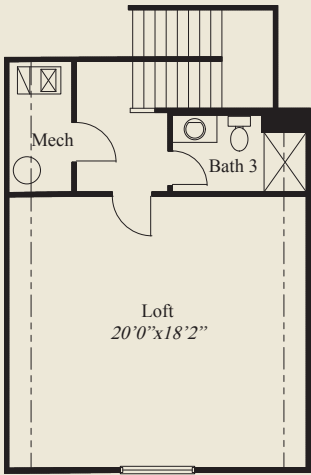


Craftsman

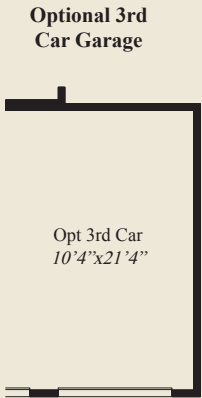
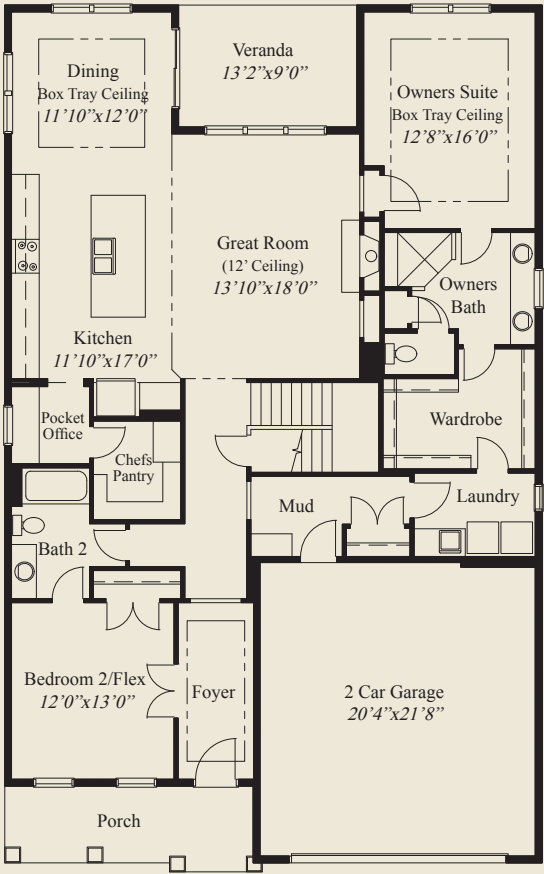


Farmhouse

- Plan Information**
- 2,363 SqFt
 - 2 Bedrooms
 - 3 Baths
 - 2 Car Garage w/Optional 3rd Car
 - Low Step Entry, Easy Access Living
 - 10' Ceilings & 8' Doors First Floor
 - 12' Ceiling Great Room
 - Large Rear Covered Veranda
 - Box Tray Ceilings in Dining, Foyer, Owners Suite
 - Guest Bedroom/Flex Room & Full Bath
 - Private Mud Entry
 - Kitchen w/ Pocket Office & Chefs Pantry
 - Owners Suite w/Oversize Shower & Wardrobe
 - Separate Laundry w/Door to Wardrobe
 - Large Second Floor Loft w/Full Bathroom



SECOND FLOOR 536 SQ.FT.



FIRST FLOOR 1,827 SQ.FT.



© Romanelli & Hughes Building Co.
All home plans present on this brochure are protected by copyright. Reproduction either in whole or in part without written permission is strictly prohibited. All renderings and floor plans are artists' conceptions and are not intended to be an actual depiction of the home or its surroundings.