

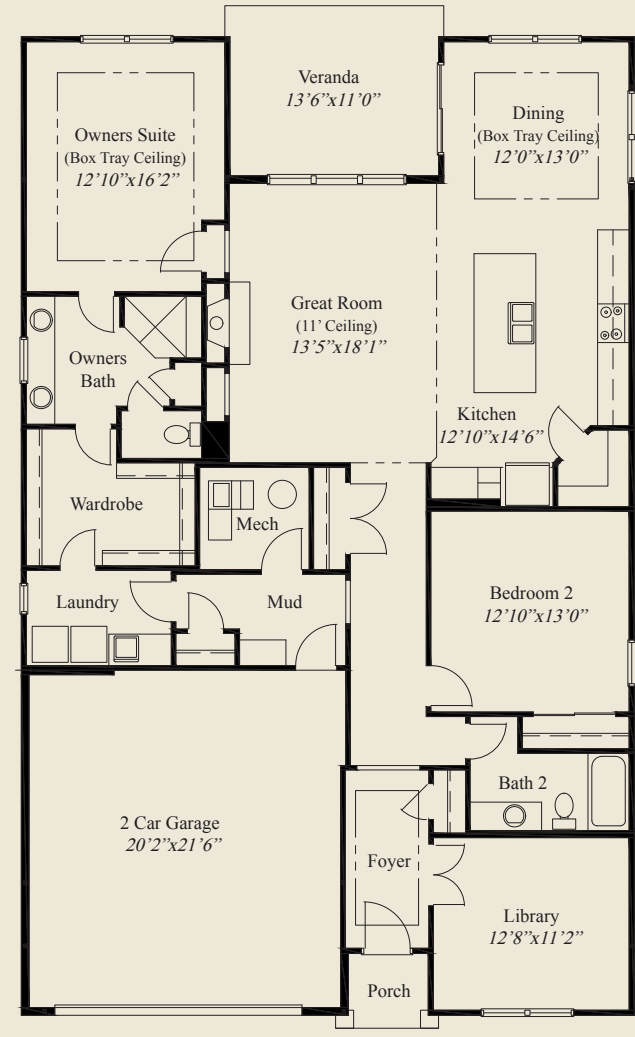


Home Information

This custom ranch patio home features low step entry, easy access living and a 11' ceiling great room. 9' ceilings and 8' doors are throughout the first floor. Box tray ceilings are in the foyer, dining and owners suite. The spacious kitchen includes a walk-in pantry. The owners suite has an oversized shower and huge wardrobe with optional door to the laundry. A private mud entry, rear covered veranda, first floor guest bedroom, library with french doors, and a large hallway storage closet, complete this beautiful home.

Plan Information

- 1,906 SqFt
- 2 Bedrooms
- 2 Baths
- 2 Car Garage
- Low Step Entry, Easy Access Living
- 11' Ceiling Great Room
- 9' Ceilings, 8' Doors on 1st Floor
- Tray Ceilings in Foyer, Dining, Owners Suite
- Large Kitchen w/Pantry
- Large Rear Covered Veranda
- Owners Suite w/Huge Shower & Wardrobe
- Wardrobe w/Optional Door to Laundry
- First Floor Guest Bedroom
- Library w/French Doors to Foyer
- Private Mud Entry



FIRST FLOOR 1,906 SQ.FT.



© Romanelli & Hughes Building Co. All home plans present on this brochure are protected by copyright. Reproduction either in whole or in part without written permission is strictly prohibited. All renderings and floor plans are artists' conceptions and are not intended to be an actual depiction of the home or its surroundings.